



Macro-moths of the Howe of Fife

S.T. Buckland

Macro-moths of the Howe of Fife

S.T. Buckland

I have included images of the species that I have been able to photograph in and around the Howe of Fife, including the high ground that largely surrounds the Howe. (I have taken the 'high ground' to extend as far east as Lucklawhill.) My thanks go to Nigel Voaden for identifying the more difficult species — and some of the less difficult ones!

Steve Buckland

steve@st-andrews.ac.uk

17/December/2025

Contents

Angle shades	6	Canary-shouldered thorn	37	Dark arches	67
Angle-striped sallow	7	Centre-barred sallow	38	Dark chestnut	68
Anomalous	8	Chestnut	39	Dark marbled carpet	69
Antler moth	9	Chevron	40	Dark sword-grass	70
Autumnal moth	10	Chimney sweeper	41	December moth	71
Autumnal rustic	11	Cinnabar	42	Dotted border	72
		Clay	43	Dotted clay	73
Barred chestnut	12	Cloaked minor	44	Dotted rustic	74
Barred red	13	Clouded border	45	Double dart	75
Barred straw	14	Clouded-bordered brindle	46	Double square-spot	76
Barred yellow	15	Clouded drab	47	Double-striped pug	77
Beautiful golden Y	16	Clouded silver	48	Dun-bar	78
Black rustic	17	Common carpet	49	Dusky brocade	79
Blair's shoulder knot	18	Common footman	50	Dwarf pug	80
Blue-bordered carpet	19	Common heath	51		
Bordered white	20	Common lutestring	52	Ear moth	81
Brick	21	Common marbled carpet	53	Early grey	82
Bright-line brown-eye	22	Common pug	54	Early thorn	83
Brimstone moth	23	Common quaker	55	Early tooth-striped	84
Brindled pug	24	Common rustic	56	Elephant hawkmoth	85
Broad-bordered yellow		Common swift	57	Emperor moth	86
underwing	25	Common wainscot	58	Engrailed	87
Broom moth	26	Common wave	59		
Brown-line bright-eye	27	Common white wave	60	Fan-foot	88
Brown rustic	28	Confused	61	Feathered thorn	89
Brown silver-line	29	Convolvulus hawk-moth	62	Flame	90
Brown-spot pinion	30	Copper underwing	63	Flame carpet	91
Buff ermine	31	Coxcomb prominent	64	Flame shoulder	92
Buff footman	32	Crescent	65	Flounced rustic	93
Buff-tip	33	Currant pug	66	Fox moth	94
Bulrush wainscot	34			Foxglove pug	95
Burnished brass	35			Freyer's pug	96
Butterbur	36			Frosted orange	97

Contents

Garden carpet	98	Knot grass	127	Mottled beauty	156
Garden tiger	99			Mottled grey	157
Ghost moth	100	Larch pug	128	Mottled pug	158
Glaucous shears	101	Large ear	129	Mottled rustic	159
Gold spangle	102	Large emerald	130	Mottled umber	160
Gold spot	103	Large wainscot	131	Mouse moth	161
Gold swift	104	Large yellow underwing	132	Muslin footman	162
Golden-rod pug	105	Latticed heath	133		
Grass rivulet	106	Least black arches	134	Narrow-winged pug	163
Green arches	107	Lempke's gold spot	135	Neglected rustic	164
Green-brindled crescent	108	Lesser broad-bordered		Netted pug	165
Green carpet	109	yellow underwing	136	Northern spinach	166
Green pug	110	Lesser swallow prominent	137	Northern winter moth	167
Green silver-lines	111	Lesser yellow underwing	138	November moth	168
Grey dagger	112	Light arches	139	Nut-tree tussock	169
Grey pine carpet	113	Light emerald	140		
Grey pug	114	Lime-speck pug	141	Oak beauty	170
		Lunar thorn	142	Oak nycteoline	171
Heart and club	115	Lunar underwing	143	Oblique carpet	172
Heart and dart	116	Lychnis	144	Ochreous pug	173
Heath rustic	117			Olive	174
Hebrew character	118	Magpie moth	145	Orange sallow	175
Hedge rustic	119	Map-winged swift	146	Orange swift	176
Herald	120	Marbled beauty	147		
Hummingbird hawkmoth	121	Marbled coronet	148	Pale brindled beauty	177
		Marbled minor	149	Pale November moth	178
Ingrailed clay	122	March moth	150	Pale pinion	179
Iron prominent	123	May highflyer	151	Pale prominent	180
		Merveille du jour	152	Pale-shouldered brocade	181
July belle	124	Middle-barred minor	153	Pebble prominent	182
July highflyer	125	Miller	154	Peppered moth	183
Juniper pug	126	Mother shipton	155		

Contents

Phoenix	184	Scarce umber	214	Square-spot rustic	247
Pine beauty	185	Scorched wing	215	Straw dot	248
Pine carpet	186	Scotch annulet	216	Streak	249
Pinion-streaked snout	187	Seraphim	217	Streamer	250
Pink-barred sallow	188	Setaceous hebrew character	218	Striped twin-spot carpet	251
Plain golden Y	189	Shaded broad-bar	219	Suspected	252
Poplar hawkmoth	190	Shears	220	Swallow prominent	253
Powdered quaker	191	Shoulder stripe	221	Swallow-tailed moth	254
Purple bar	192	Shoulder-striped wainscot	222	Sword-grass	255
Purple clay	193	Shuttle-shaped dart	223		
		Silver-ground carpet	224	Tawny-barred angle	256
Red chestnut	194	Silver Y	225	Triple-spotted clay	257
Red-green carpet	195	Single-dotted wave	226	True lover's knot	258
Red-line quaker	196	Six-spot burnet	227	Turnip moth	259
Red-necked footman	197	Six-striped rustic	228	Twin-spot carpet	260
Red sword-grass	198	Slender brindle	229	Twin-spotted quaker	261
Riband wave	199	Sloe pug	230		
Rivulet	200	Small angle shades	231	Uncertain	262
Rosy minor	201	Small clouded brindle	232		
Rosy rustic	202	Small dotted buff	233	V-pug	263
Ruby tiger	203	Small dusty wave	234		
Rustic	204	Small elephant hawk-moth	235	Water carpet	264
Rustic shoulder-knot	205	Small fan-foot	236	Welsh wave	265
		Small fan-footed wave	237	White ermine	266
Sallow	206	Small phoenix	238	White-line dart	267
Sallow kitten	207	Small quaker	239	Willow beauty	268
Sandy carpet	208	Small rivulet	240	Winter moth	269
Satellite	209	Small square-spot	241	Wood tiger	270
Satin beauty	210	Smoky wainscot	242	Wormwood pug	271
Scallop shell	211	Snout	243		
Scalloped hazel	212	Spectacle	244	Yellow-barred brindle	272
Scalloped oak	213	Spring usher	245	Yellow horned	273
		Spruce carpet	246	Yellow-line quaker	274
				Yellow shell	275



Angle shades

A common species in a range of habitats, with the resident population often supplemented by migrants.





Angle-striped sallow

A highland species that was discovered at Tentsmuir a few years ago. This one was at Lucklawhill in early September 2024, suggesting that the Tentsmuir colony is spreading.





Anomalous

A widespread summer species in a range of habitats, but only recorded from a handful of sites in Fife.





Antler moth

A common grassland species.





Autumnal moth

A woodland species that is very similar to the November and pale November moths.





Autumnal rustic

A common but declining species of open habitats.





Barred chestnut

A locally-distributed species of broad-leaved woodland and moorland.



Barred red

Common, especially in conifer plantations.





Barred straw

A common species of hedgerows and gardens.





Barred yellow

A common species of open woodland and gardens.





Beautiful golden Y

A common summer species in a range of habitats.





Black rustic

A common autumn species.





Blair's shoulder-knot

Occurs where cypress trees grow. It was first recorded in the UK in 1951, and it has since spread northwards from the south of England. It only recently arrived in Fife. This one was at Kedlock Feus in October 2021.





Blue-bordered carpet

Sparsely distributed in Fife, occurring mostly where alders grow. This one was at Kedlock Feus in mid-August 2022.



Bordered white

A common species where mature conifers occur.





Brick

An autumn species of broad-leaved woodland, not numerous in Fife. The one below right was at Letham, while the others were at Kedlock Feus.





Bright-line brown-eye

Common in a variety of habitats.





Brimstone moth

A common species in a variety of habitats.





Brindled pug

A common species, appearing earlier in the year than most pugs.





Broad-bordered yellow underwing

A widespread species of broadleaf woodland that is never numerous.





Broom moth

A common species of open habitats.





Brown-line bright-eye

A common grassland species.





Brown rustic

A common species, especially in broadleaf woodland.





Brown silver-line

A common species where bracken occurs.





Brown-spot pinion

A common species of woodland, heathland, hedgerows and gardens.





Buff ermine

Rarely recorded in eastern Scotland north of the Firth of Forth. This one was on Berry Brae near Norman's Law in mid-June 2025.





Buff footman

A southern species that recently arrived in Fife. Not widespread, but is now locally common, for example at Tentsmuir. This one was at Kedlock Feus.





Buff-tip

A scarce species in Fife that is becoming more widespread. This one was on Lucklawhill in late June 2024.





Bulrush wainscot

Relatively common in areas with bulrushes.





Burnished brass

A common species where nettles occur.





Butterbur

An uncommon species, mostly restricted to large patches of its foodplant, butterbur. The one above and below was on the river bank near Kilmany on 27 Aug 2021, while the one on the right was at Kedlock Feus on 18 Aug 2022.





Canary-shouldered thorn

A common species of woodland and gardens.





Centre-barred sallow

A locally-distributed species of broad-leaved woodland and other habitats where ash occurs.





Chestnut

A common winter-flying species.





Chevron

Locally-distributed in a range of open habitats in Fife.





Chimney sweeper

Fairly common in suitable habitat. These were at Clatto Reservoir (above) and Auchtermuchty Common (below).





Cinnabar

This day-flying moth is most common in coastal areas, but is increasingly recorded from inland sites.





Clay

Common in a range of open habitats.





Cloaked minor

A locally-distributed grassland species that occurs mostly at or near the coast. The one above was at Black Craig near Norman's Law in early July 2023, while the one below was at Kedlock Feus in late July 2021.





Clouded border

A common species of woodland and heathland.





Clouded-bordered brindle

A common species varying from light to dark, which occurs in a range of habitats.





Clouded drab

A common spring species.





Clouded silver

This is a southern species that has been rapidly spreading north, and is now sparsely-distributed in Fife. These were at Kedlock Feus in May and June 2022.





Common carpet

A common species, often occurring in gardens.





Common footman

A scarce species in Fife, not often seen inland. This one was at Kedlock Feus in late July 2023.





Common heath

A common moorland species. This was one of several by the path from Craigmead to East Lomond.



Common lutestring

Despite its name, this is not a common species in east Fife. It occurs in woodland where birches are plentiful. This one was on Lucklawhill on 1 June 2024, an early date for this species.



Common marbled carpet

A common species with variable markings, which occurs in a range of habitats.





Common pug

A common species occurring in a range of habitats.





Common quaker

A common spring species.





Common rustic

A common and very variable species of grasslands. Identity not certain, as it cannot be distinguished from the lesser common rustic from photos.





Common swift

The common swift is close to the northern edge of its UK range in Fife.





Common wainscot

Despite its name, this is a locally-distributed species in Fife. These individuals were at Kedlock Feus in early July 2021.





Common wave

A common species of wet woodland.





Common white wave

A common woodland species.





Confused

Rarely seen in Fife, I recorded four in mid-July 2025, one by the path between Black Craig and Berry Brae at Carphin, and the other three by the path on Norman's Law.





Convolvulus hawk-moth

This huge moth is a scarce migrant. This one was on the crag east of Norman's Law in early September 2025.





Copper underwing

A southern species that has recently spread to Fife. It occurs in woodland, hedgerows and gardens.





Coxcomb prominent

A fairly common woodland species that also occurs in gardens.





Crescent

Mostly a migrant moth in small numbers in Fife. This one was at Kedlock Feus in mid-September 2021.





Curren pug

A common species in gardens and woodland.





Dark arches

A large species, common in a wide range of habitats in summer.





Dark chestnut

A southern species that has only rarely been recorded in Fife. The one above was at Carphin in early November 2025, while the one below was at Kedlock Feus in mid-November 2021, the first record for the area covered here.





Dark marbled carpet

A common species, found mostly in woodland and moorland.





Dark sword-grass

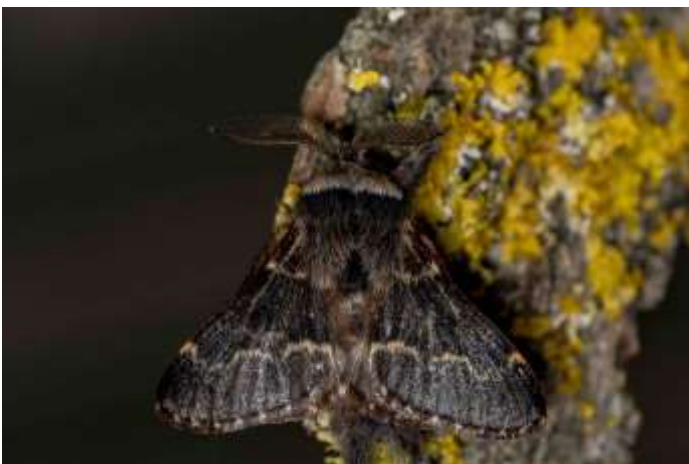
A migrant moth in small numbers, mostly coastal. This one was at Kedlock Feus in mid-October 2021.





December moth

A common species of woods, hedges and gardens.





Dotted border

A common species in late winter and spring. These are all males, which vary in appearance, but always with dots along the wing edges. The females are flightless.





Dotted clay

A common species in a variety of habitats.





Dotted rustic

A locally-distributed species of open country. Relatively little is known about it. The one below was at Elmwood Golf Course on 19 July 2022, while the others were at Lucklawhill on exactly the same date, but in 2024.





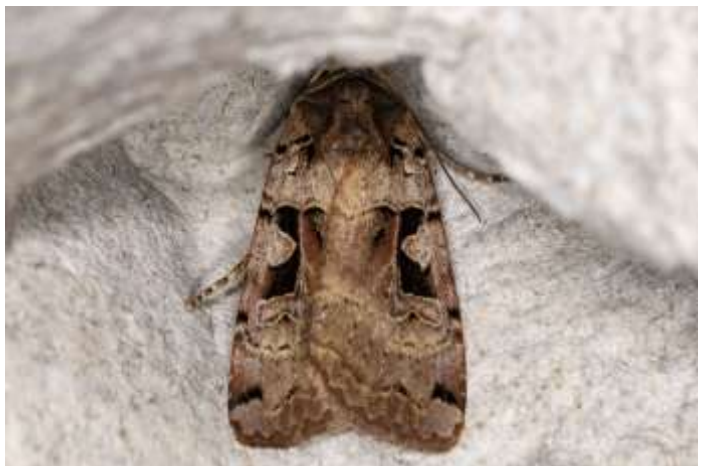
Double dart

A declining species of broadleaved woodland. This one was at Gaddon Loch in late June 2022.



Double square-spot

A common species in a variety of rural habitats.





Double-striped pug

A common species in a range of habitats.





Dun-bar

A common species of woodland, hedgerows and gardens.





Dusky brocade

Widespread in grassy habitats.





Dwarf pug

A fairly common pug, mostly in conifer plantations.





Ear moth

Although mostly a coastal species in Fife, these were on Black Craig near Norman's Law.





Early grey

A spring species that is common further south and west but fairly scarce in Fife.





Early thorn

A common species that first appears quite early in the year.





Early tooth-striped

A spring species that occurs in damp broadleaved woodland, especially where willows grow.





Elephant hawkmoth

A large, attractive moth that is relatively common.





Emperor moth

An impressive moth that is common in suitable habitat. The male above was on the east slopes of East Lomond in April 2021. The female was on Lucklawhill in May 2024.





Engrailed

A fairly common species in broadleaved woodland.





Fan-foot

A locally-distributed species of woodland, scrub and gardens in Fife.





Feathered thorn

A locally-distributed species of broadleaved woodland.





Flame

A common species in a range of habitats in Scotland.





Flame carpet

A common species in a range of habitats in Scotland.





Flame shoulder

Common in a range of habitats.





Flounced rustic

A fairly common species of grassy habitats.





Fox moth

A large moth that is very local in Fife, occurring in the Tentsmuir area, on the Lomond Hills and the hills to the west of the Lomonds. This one was on East Lomond in late June 2024.





Foxglove pug

Common wherever foxgloves grow.





Freyer's pug

Fairly widespread but not common in Fife. These were at Kedlock Feus in mid-June 2023.





Frosted orange

A common species of rough grassland.





Garden carpet

A common species, especially in gardens.





Garden tiger

Common in open habitats.





Ghost moth

A large and quite common species. Males appear to glow and swing like a pendulum in the air when trying to attract females. Male above and below right, female below left.





Glaucous shears

A species of moorland that is seldom recorded in Fife. The one above and below was on Lucklawhill and the one on the right at Craigmead, both in mid-May 2024.





Gold spangle

In Fife, a scarce species that occurs across a variety of habitats. The one below was at Lucklawhill in late July 2024. The one above was at Carphin in late July 2025.





Gold spot

A locally-distributed species in Fife, occurring mostly in damp habitats.





Gold swift

A locally-distributed species of open woodland. This male was at Kedlock Feus in mid-July 2021.





Golden-rod pug

A locally-distributed species, although it can occur in a wide range of habitats.





Grass rivulet

A relatively local species but can be numerous at Auchtermuchty Common, where these photos were taken.





Green arches

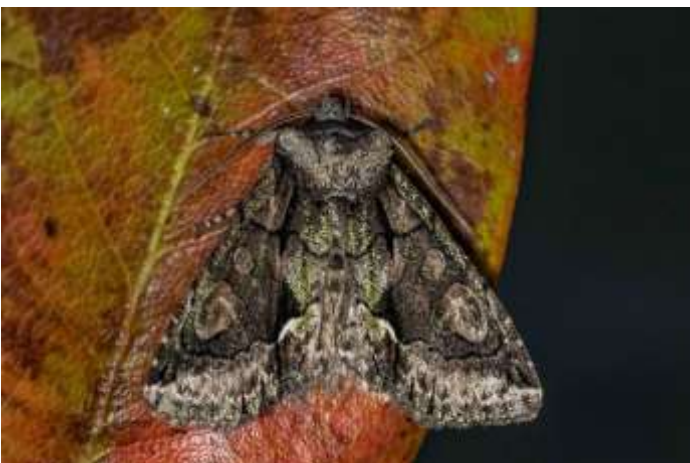
A fairly common species of broadleaved woodland.





Green-brindled crescent

A common species of broadleaved woodland, hedgerows and gardens.





Green carpet

A common species in a range of habitats.





Green pug

A common species where apple trees occur.





Green silver-lines

An attractive species of broadleaved woodland, uncommon in Fife. This one was at Kedlock Feus in mid-May 2023.





Grey dagger

Widely distributed through a variety of habitats.





Grey pine carpet

A common species of coniferous woodland and gardens.





Grey pug

Common in a range of habitats.





Heart and club

A scarce species in Fife, and occurring mostly on coastal dunes. The one above was at Gaddon Loch in late June 2022, while the one below was one of two at Kedlock Feus in early July 2022.





Heart and dart

A widespread species, occupying most habitats.





Heath rustic

A locally-distributed species of heath and moorland. These were at Black Craig by Norman's Law and Lucklawhill.





Hebrew character

A common spring species.





Hedge rustic

A scarce grassland species that has seen large declines in recent decades. These were at Black Craig by Norman's Law and Lucklawhill.





Herald

Locally-distributed in Fife, occurring where willows or poplars grow. The hibernating moths below were among 27 hibernating in the tunnel at the bottom of Maspie Den by Falkland in December 2021.





Hummingbird hawkmoth

A rare migrant to the Howe of Fife from southern Europe and northern Africa. This individual was at Kedlock Feus on 24 July 2019.



Ingrailed clay

A common species with variable markings. It occurs mostly on moorland.





Iron prominent

Occurs in broadleaved woodland and heathland where birches or alders grow.





July belle

A locally-distributed species, mostly on heathland and moorland. These were at Gaddon Loch and Carphin.





July highflyer

A common and very variable woodland and moorland species.





Juniper pug

A fairly common species that has expanded its range because of the planting of junipers in gardens.



Knot grass

Widely-distributed but scarce in Fife. This one was at Elmwood Golf Course in late June 2022.





Larch pug

A rather local species in Fife. This one was on Lucklawhill in late June 2024.



Large ear

A locally-distributed species of moorland and marsh. This one was at Kedlock Feus in late August 2021.





Large emerald

A common species of woodland and grassland.





Large wainscot

Locally-distributed in Fife, occurring in areas with reeds.





Large yellow underwing

A common resident and migrant.





Latticed heath

A relatively scarce species in Fife. The above one was at Clatto Reservoir in mid-July 2019, while the other two were at Kedlock Feus in July 2021.





Least black arches

Once rare, this species is now commonly recorded in Fife.





Lempke's gold spot

A locally-distributed species of wet habitats.





Lesser broad-bordered yellow underwing

A common species.





Lesser swallow prominent

A widespread species, occurring in a range of habitats.





Lesser yellow underwing

A common species in a variety of habitats.





Light arches

A common species in grassy places.





Light emerald

A common species of broadleaved woodland.





Lime-speck pug

Fairly common in open habitats, especially coastal habitats. This one was at Kedlock Feus in mid-July 2021.





Lunar thorn

A locally-distributed species.





Lunar underwing

A common grassland species.





Lychnis

Common in a range of habitats.





Magpie moth

Most abundant on heather moorland, but also occurs in woodland and gardens.





Map-winged swift

A species that is widespread and fairly common in Fife.





Marbled beauty

A scarce species in Scotland. Prefers habitats with stone walls or bare rock.





Marbled coronet

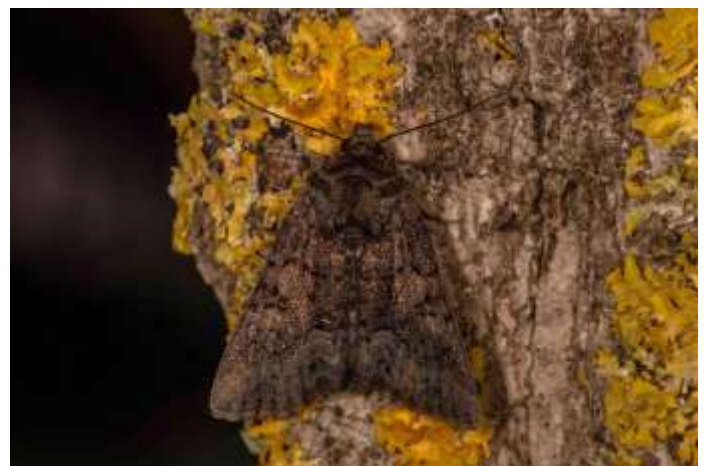
A scarce species in Fife, occurring mostly at or near the coast. The one above was at Kedlock Feus in mid-July 2022, while the one below was at Gaddon Loch in mid-June 2022.





Marbled minor

Occurs in a range of grassy habitats. Becoming less common.





March moth

The adult occurs in late winter and spring, and can be quite numerous. Females are wingless, so these are males.





May highflyer

A fairly common species where alders grow.





Merveille du jour

A fairly common species of broad-leaved woodland and hedgerows.





Middle-barred minor

A small, common summer species.





Miller

A locally-distributed summer species, associated with a range of deciduous trees. These were on Berry Brae on Carphin estate, east of Norman's Law.





Mother Shipton

Not a common moth in Scotland. These were at Black Craig near Norman's Law.





Mottled beauty

A common woodland species.





Mottled grey

A fairly common spring species.





Mottled pug

A locally-distributed species in Scotland.





Mottled rustic

A relatively scarce species in Fife. It occurs in a range of habitats. The one above was at Gaddon Loch and the one below at Elmwood Golf Course.





Mottled umber

A common moth of woodland, hedges and gardens that flies from October to late December. Its markings are very variable!





Mouse moth

A common species in a variety of habitats. When disturbed, it scuttles mouse-like for cover.





Muslin footman

A sparsely-distributed species. The one above was at Kedlock Feus, and the one below at Carphin.





Narrow-winged pug

Common on heathland and moorland.





Neglected rustic

A locally-distributed species of heathland and moorland. This one was at Lucklawhill in early September 2024.





Netted pug

Seldom recorded in Fife, this one was at Gaddon Loch in early June 2022.



Northern spinach

Largely an upland species, the one above was on East Lomond in late June 2024, while the one below was at Kedlock Feus in late July 2021.





Northern winter moth

This late autumn and early winter species is similar to winter moth, but paler and usually larger. It is fairly widespread in Scotland, but not often recorded in Fife. This one was on moorland, by the path to Norman's Law, in early November 2025.





November moth

A common species of broadleaved woodland, hedges and gardens.





Nut-tree tussock

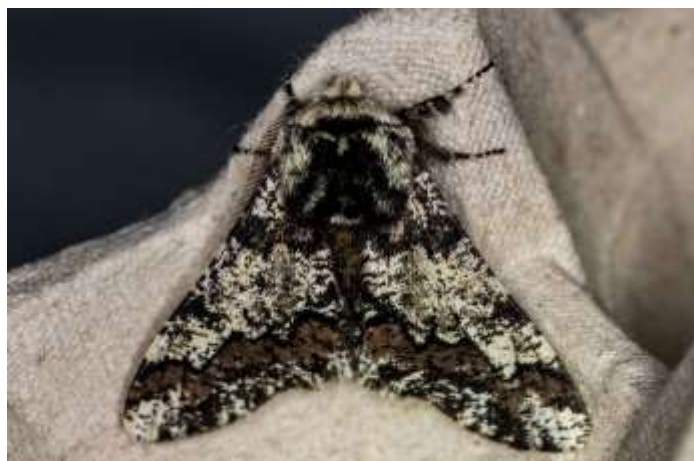
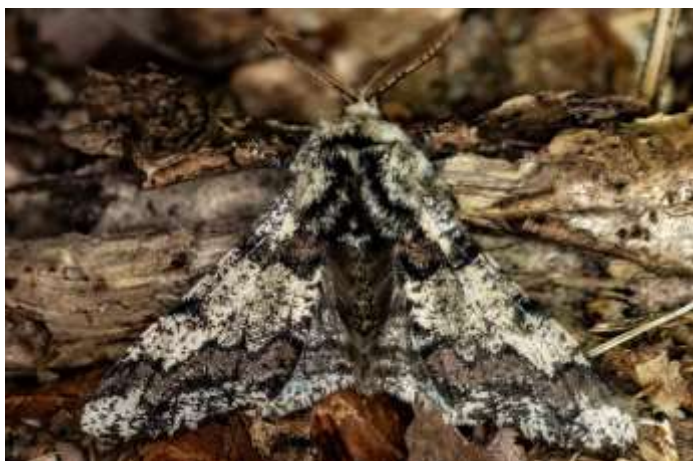
A common species of deciduous woodland.





Oak beauty

A scarce spring species in Fife, occurring at just a handful of sites, mostly in the west. These were at Rankeilour in 2025. The one above and right was there on the unusually early date of 20 February.





Oak nycteoline

Mainly a southern species that is rarely recorded in Fife. This one was near the oak trees by the east bank of Gaddon Loch on 23 March 2022.





Oblique carpet

The first record of this species in Fife was from Rossie in 2021. The one above and below left was at Gaddon Loch on 1 September 2023, and is the first Fife record away from Rossie. The one below right was at Kedlock Feus just two days later.





Ochreous pug

A species of pinewoods and plantations that is not often recorded in Fife. The one above was at Gaddon Loch in mid-May 2022, while the one below was on Lucklawhill in mid-May 2024.





Olive

A scarce species, occurring where poplars grow. This one was at Gaddon Loch in mid-August 2024.





Orange sallow

A locally-distributed species associated with lime trees. This one was at Kedlock Feus in early September 2024.





Orange swift

A common species occurring in a range of grassy habitats.





Pale brindled beauty

A common species that flies very early in the year. These were at Kedlock Feus in January and February.





Pale November moth

Very similar to but less common than the November moth. It is associated with beech woodland. This one was at Gaddon Loch in mid-October 2023.



Pale pinion

A southern species that has spread into Scotland. Occurs in October and November, and again in March and April when the adult emerges from hibernation. Locally distributed. The dark one above was at Gaddon Loch in late March 2022, while the others were at Kedlock Feus in late March and April 2021.





Pale prominent

A locally-distributed species, occurring where poplars grow. This was one of two at Gaddon Loch in mid-May 2022.





Pale-shouldered brocade

A common woodland species.





Pebble prominent

A fairly common species where willows and poplars grow.





Peppered moth

A fairly common species, occurring in a range of habitats.





Phoenix

A locally-distributed species of gardens and woodland in Fife. This one was at Kedlock Feus in late July 2022.



Pine beauty

A pretty species with an impressive hair-do! Not numerous in Fife. The one below was by Gaddon Loch in late April 2022, while the one above was at Kedlock Feus in late April 2023.





Pine carpet

Common where there are extensive areas of pines. These were at Elmwood Golf Course.





Pinion-streaked snout

A scarce species of damp habitats.





Pink-barred swallow

Most common in woodland where there are willows or poplars.





Plain golden Y

A fairly common species, occurring in a range of habitats.





Poplar hawkmoth

The most widely-distributed and common hawkmoth in Fife.





Powdered quaker

A species of bogs, marshes and damp woodland that is not common in east Fife. This one was at Gaddon Loch in early May 2023.





Purple bar

A common species across a range of habitats.





Purple clay

A common species of broad-leaved woodland.





Red chestnut

A woodland species that is not especially common in Fife. The above was one of several at Lucklawhill in early May 2024, while the one below was at Gaddon Loch in early May 2023.





Red-green carpet

A common species of broad-leaved woodland, hedgerows and gardens.





Red-line quaker

A common autumn moth in a range of habitats. The one below is covered in rain droplets.





Red-necked footman

This species has been rapidly expanding its range in Scotland, especially in areas with conifer plantations. This one was on Lucklawhill in late June 2024.



Red sword-grass

A locally distributed species of spring and autumn, and a regular migrant in small numbers. This one was at Gaddon Loch in mid-October 2023.





Riband wave

A common species in a range of habitats.





Rivulet

A fairly local species of open woodland and hedgerows.





Rosy minor

A scarce species in Fife, especially away from the coast. This one was at Lucklawhill in late July 2024.



Rosy rustic

A common species of late summer and autumn. Most records are of males. The larger, greyer one below left is a female.





Ruby tiger

A fairly common species of open habitats.





Rustic

A common species that is difficult to separate from the appropriately-named uncertain.





Rustic shoulder-knot

A common species in a variety of habitats.





Sallow

Common where sallows and poplars grow.





Sallow kitten

A scarce moth in Fife. The one below was on East Lomond in early July 2024, while the one above was at Berry Brae on Carphin estate in late June 2025.





Sandy carpet

Widely distributed mostly in open habitats.





Satellite

Mostly a southern species that is locally distributed in Fife. These were at Kedlock Feus in spring (below) and autumn (above and right) 2021.





Satin beauty

A woodland species that has increased its range in Scotland in recent decades.





Scallop shell

An uncommon species in Scotland. It is associated with willows, aspen and bilberry. This one was on Berry Brae on Carphin estate in late June 2025.





Scalloped hazel

A fairly common species.





Scalloped oak

A widespread species in woodland, hedgerows and gardens.





Scarce umber

Despite its name, this is a relatively common late autumn species of broadleaved woodlands.





Scorched carpet

A southern species that has spread in Scotland, but which is still very scarce, especially in Fife. This one was at Carphin in mid-May 2025.





Scotch annulet

A mountain species. The images below and right were taken at Black Craig by Norman's Law, in July 2022 or later, and are the first records for Fife. The one above was one of two on the east slope of Norman's Law in June 2025.





Seraphim

Rarely recorded in Fife, the seraphim is a species of broadleaved woodland with poplars. These were at Gaddon Loch in May 2022.





Setaceous Hebrew character

A common species, occurring in a range of lowland habitats.





Shaded broad-bar

A common species, often seen in daylight.





Shears

This species is uncommon inland in Fife. The one above was at Craigmead in mid-May 2024 and the one below was at Gaddon Loch in late May 2023.





Shoulder stripe

A common spring species.





Shoulder-striped wainscot

A species that is spreading in Scotland, and is now relatively common in Fife.





Shuttle-shaped dart

A southern species that is spreading northwards, and increasingly recorded in Fife. The one below was at Gaddon Loch in early May 2022, while the one above was at Kedlock Feus in late May 2022.





Silver-ground carpet

A common species, often seen in daylight.





Silver Y

A common migrant.





Single-dotted wave

In Fife, a locally-distributed species of woodland and gardens.





Six-spot burnet

Mostly coastal in Scotland, but this species is common at Gaddon Loch, where these photos were taken.





Six-striped rustic

A common species, mostly in wet habitats.





Slender brindle

A southern species that has spread northwards. Mainly occurs in woodland with grassy areas.





Sloe pug

In Fife, this species has only been recorded at Gaddon Loch, where there is abundant blackthorn (sloe), its food plant. This one was there in late June 2022.



Small angle shades

A widespread but rather scarce species in Fife. This one was at Kedlock Feus on 1 July 2022.





Small clouded brindle

In Scotland, a locally-distributed grassland species. These were at Kedlock Feus in July 2022 (below) and June 2023.





Small dotted buff

A common species of wet grassland.





Small dusty wave

A fairly common species of hedgerows and gardens.





Small elephant hawk-moth

A locally-distributed species whose caterpillars mostly feed on bedstraws. The one above and below right was at Gaddon Loch, while the one below left was on East Lomond.





Small fan-foot

A common species of broad-leafed woodland and hedgerows.





Small fan-footed wave

A common species of broad-leafed woodland.





Small phoenix

A common woodland species.





Small quaker

Mainly a southern species that is locally distributed in Scotland.





Small rivulet

A common species in a range of lowland habitats.





Small square-spot

A widely-distributed species.





Smoky wainscot

A common species of grassland.





Snout

Common in a range of habitats.





Spectacle

The caterpillars feed on nettles. Adults are sparsely distributed through Fife.





Spring usher

A rare moth in Fife, recorded from just two sites in the west before this one, which was at Rankeilour on 20 February 2025.





Spruce carpet

A species that was formerly locally distributed in Scotland which has become quite common.





Square-spot rustic

A common species where grass occurs.





Straw dot

Less common in eastern Scotland than further south and west.





Streak

An autumn species, common where broom occurs.





Streamer

A common species whose caterpillars feed mostly on wild dog roses.





Striped twin-spot carpet

A locally-distributed species. This is the first one recorded in Fife, and was on East Lomond in mid-August 2024.



Suspected

A scarce species in Fife, associated with birch. The one above was at Lucklawhill in late July 2024, while the rather worn individual below was at Black Craig by Norman's Law in mid-August 2023.





Swallow prominent

A locally-distributed species of woodland and gardens.





Swallow-tailed moth

A large and attractive moth, mostly of woodland. Fairly common, even in towns.





Sword-grass

A species that is rapidly declining, and seldom recorded outside of the Highlands. The one above and below right was at Kedlock Feus on 23 March 2021 — only the 5th modern record for Fife. The one on the right was there on 7 April 2021, and the one below left was at Kilmany on 22 March 2022. Perhaps there is a colony in the area!





Tawny-barred angle

A common species, mostly in conifer plantations.





Triple-spotted clay

A rare species in east Scotland. It is a species of open, wet broadleaved woodland. The above two were at Black Craig by Norman's Law in late July 2022, and the one below was at the same site in early July 2023.





True lover's knot

A common species of heather moorland. The one below was at Kedlock Feus in mid-July 2021, well away from its usual habitat, possibly relying on heather grown in gardens.





Turnip moth

A large moth that occurs in small numbers in a range of habitats.





Twin-spot carpet

Occurs in a variety of upland and lowland habitats.





Twin-spotted quaker

A southern species that is spreading through Scotland.





Uncertain

The above moth is certainly an uncertain, though the one below lives up to its name, as rustic cannot be definitively ruled out from these images.





V-pug

A common species that has spread from the south, although still relatively scarce in the east of Scotland. The worn individual below was at Kedlock Feus in mid-May 2021, while the one above was there in late July 2021. The one on the right was at Elmwood Golf Course in mid-April 2022.





Water carpet

Common in suitable habitat, such as rough grazing.





Welsh wave

A locally-distributed species. The main foodplant of its caterpillars is rowan.





White ermine

A common species in a range of habitats.





White-line dart

A scarce species away from the coast. This one was at Black Craig by Norman's Law in late July 2022.





Willow beauty

Well-distributed in Fife, and often occurs in gardens.





Winter moth

A widespread and common species of late autumn and early winter.





Wood tiger

An uncommon species in Fife. This one was at Black Craig near Norman's Law in late June 2021.



Wormwood pug

A fairly common species, occurring in a range of habitats.





Yellow-barred brindle

A scarce species of broadleaved woodland. The one above was at Gaddon Loch in early May 2023, while the one below was on Lucklawhill in mid-May 2024.





Yellow horned

A spring species that can be numerous in areas of birch woodlands. These were at Gaddon Loch in late March 2022.





Yellow-line quaker

A common species of broad-leaved woodland, moorland and hedgerows.





Yellow shell

A common species with several sub-species. Although it occurs mostly at or near the coast in Fife, it can also be found in and around the Howe of Fife, for example at Auchtermuchty Common and on moorland at Norman's Law.

