



# Hoverflies of Bankhead Moss

S.T. Buckland

# Hoverflies of Bankhead Moss

S.T. Buckland

These are the hoverfly species of Bankhead Moss that I have so far identified and photographed. I would like to thank the remarkable support given by Roger Morris and colleagues through the UK Hoverflies Facebook page. Any remaining errors of identification are mine alone!

Steve Buckland

[steve@st-andrews.ac.uk](mailto:steve@st-andrews.ac.uk)

5/May/2024

# Contents

<i>Baccha elongata</i>	4	<i>Eurimyia lineata</i>	21	<i>Parasyrphus punctulatus</i>	34
<i>Cheilosia albitarsis/ranunculi</i>	5	<i>Helophilus hybridus</i>	22	<i>Platycheirus albimanus</i>	35
<i>Cheilosia bergenstammi</i>	6	<i>Helophilus pendulus</i>	23	<i>Platycheirus granditarsus</i>	36
<i>Cheilosia illustrata</i>	7			<i>Platycheirus peltatus</i>	37
<i>Cheilosia pagana</i>	8	<i>Leucozona laternaria</i>	24		
<i>Cheilosia scutellata</i>	9	<i>Leucozona lucorum</i>	25	<i>Rhingia campestris</i>	38
<i>Chrysogaster solstitialis</i>	10	<i>Melangyna compositarum</i>	26	<i>Scaeva pyrastris</i>	39
<i>Chrysotoxum arcuatum</i>	11	<i>Melanogaster hirtella</i>	27	<i>Sericomyia silentis</i>	40
<i>Episyrphus balteatus</i>	12	<i>Melanostoma mellinum</i>	28	<i>Sphaerophoria</i> sp	41
		<i>Melanostoma scalare</i>	29		
				<i>Syritta pipiens</i>	42
<i>Eristalis arbustorum</i>	13				
<i>Eristalis horticola</i>	14	<i>Meliscaeva cinctella</i>	30	<i>Syrphus ribesii</i>	43
<i>Eristalis intricaria</i>	15			<i>Syrphus torvus</i>	44
<i>Eristalis nemorum</i>	16	<i>Myathropa florea</i>	31	<i>Syrphus vitripennis</i>	45
<i>Eristalis pertinax</i>	17				
<i>Eristalis tenax</i>	18	<i>Neoascia meticulosa</i>	32		
		<i>Neoascia tenur</i>	33	<i>Xylota segnis</i>	46
<i>Eupeodes corollae</i>	19				
<i>Eupeodes latifasciatus</i>	20				



## Common dainty *Baccha elongata*

A widespread species of woodlands, which is never numerous. This female was at Bank-head Moss in early June 2019.



Buttercup blacklet *Cheilosia albitarsis* /

bulbous buttercup blacklet *Cheilosia ranunculi*

Widespread. Identified as one of these two species by the paler segments above the black front feet. Male above, female below.





Ragwort blacklet *Cheilosia bergenstammi*

Widespread. This female was at Bankhead Moss in mid-May 2019.





## Bumblebee blacklet *Cheilosia illustrata*

Widespread. Male above and below left, female below right.





## Parsley blacklet *Cheilosia pagana*

A fairly common species. The females (above and below left) are readily identifiable from other *Cheilosia* by their large antennae.







Bolete blacklet *Cheilosia scutellata*

Uncommon in Scotland. This female was at Bankhead Moss in early September 2019.



## Dark-winged wrinklehead *Chrysogaster solstitialis*

A widespread species in summer, although seldom numerous. This female is swollen with eggs.



## Little meadow fly *Chrysotoxum arcuatum*

Sparingly distributed in Fife. These females were at Bankhead Moss in early September 2019.





## Marmalade hoverfly *Episyrphus balteatus*

Very common. One of the first hoverflies to appear in spring, and a common migrant in summer.





## Eurasian drone fly *Eristalis arbustorum*

A widely-distributed drone fly. Male above, female below.





## Stripe-winged drone fly *Eristalis horticola*

Another widely-distributed drone fly. These are a male (above) and a female, recorded in late July 2019.





## Furry drone fly

### *Eristalis intricaria*

Less widespread than the other species of drone fly shown here, but it can be abundant where it occurs. A male below right, while the others are females.





## Stripe-faced drone fly *Eristalis nemorum*

A common drone fly. This female was at Bankhead Moss in late July 2019.







## Tapered drone fly *Eristalis pertinax*

A large and widespread drone fly. These are females. The image above shows clearly the yellow feet that help to identify this species.





## Common drone fly *Eristalis tenax*

A large and common drone fly. Male above, female below.





## Migrant aphideater *Eupeodes corollae*

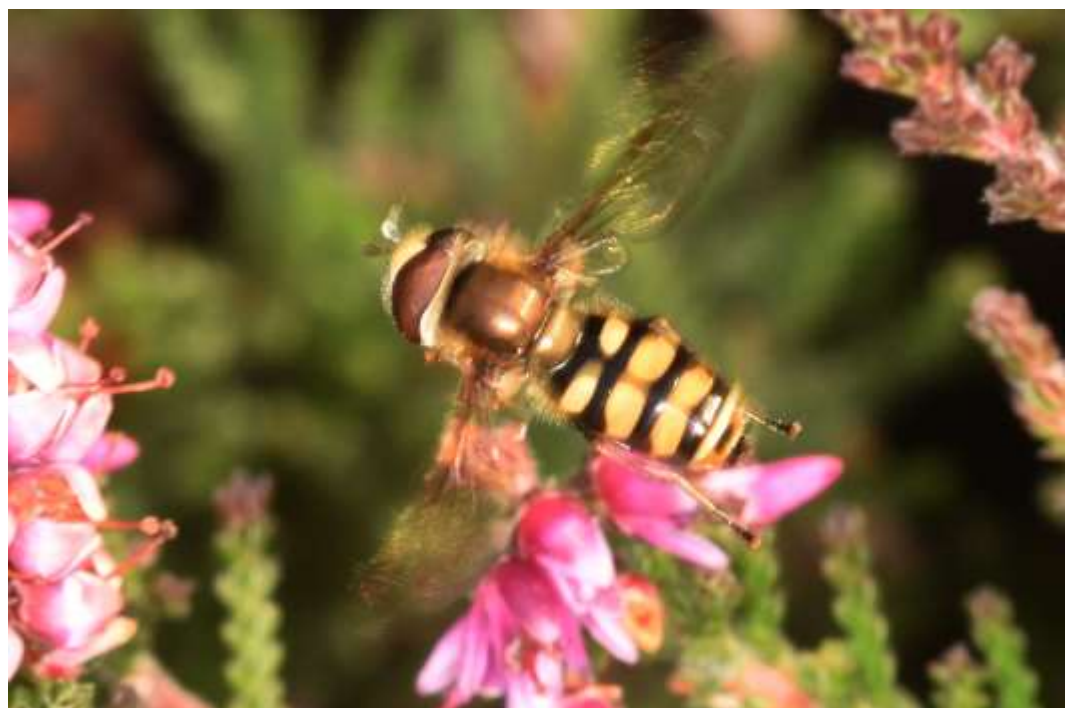
A common small hoverfly that often migrates in large numbers. Male above, female below.





## Broad-banded aphideater *Eupeodes latifasciatus*

A relatively uncommon species that can be difficult to spot amongst more common *Eupeodes corollae*. This male was at Bankhead Moss in late September 2018.





## Snouted duck fly *Eurimyia lineata*

A species of wetlands. This male was by the boardwalk at Bankhead Moss in early June 2019.





## Woolly-tailed marsh fly *Helophilus hybridus*

Appreciably less common than the next species. This male (above) and female were at Bankhead Moss in early September 2019.





## Tiger marsh fly *Helophilus pendulus*

A widespread species of wet habitats. Female above, male below.





## Dark-saddled hoary *Leucozona laternaria*

An attractive but uncommon hoverfly. This female was at Bankhead Moss in late July 2019.





## Blotch-winged whitebelt *Leucozona lucorum*

An attractive hoverfly. This female was at Bankhead Moss in late July 2019.



## Matt-backed halfband *Melangyna compositarum*

A woodland species that is most common in mid-summer. These females were at Bank-head Moss in late July 2019.





## Common wrinklehead *Melanogaster hirtella*

Small very black hoverflies. These were at Bankhead Moss in early June 2019. Male above and females below. The females are certainly this species; the male probably is, but could be *Melanogaster aerosa*.





## Variable duskyface *Melanostoma mellinum*

Very similar to, but appreciably less common than, *Melanostoma scalare*. The above male was at Bankhead Moss in early September 2019, while the female below came to a moth trap in early May 2024.





## Long-winged duskyface *Melanostoma scalare*

A very common small hoverfly. Female above, male below.





## Banded thintail *Meliscaeva cinctella*

Rather local in distribution, but can be common where it occurs. This female was at Bank-head Moss in mid-September 2018.





## Common batman fly *Myathropa florea*

A relatively common and distinctive species. Its common name arises from the distinctive marks on its thorax.



Yellow-kneed fen fly *Neoascia meticulosa*

One of several similar, tiny species. This female was at Bankhead Moss in early June 2019.





## Black-kneed fen fly *Neoascia tenur*

Another tiny hoverfly. There were large numbers at Bankhead Moss in late May 2019.





## Common spotted bristleside *Parasyrphus punctulatus*

A spring species that frequently feeds on willow catkins. This male was at Bankhead Moss in late April 2024.





## Grey-spotted sedge-sitter *Platycheirus albimanus*

A small, very common species. The above female is swollen with eggs. Another female below left, and a male below right.





## White-spotted sedgesitter *Platycheirus peltatus*

Now considered a group of species. These are females.





## Hornhand sedge-sitter *Pyrophaena granditarsa*

This attractive hoverfly is locally distributed. The male above was at Bankhead Moss in early August 2019, while the male (left) and female below were there in mid-September 2018.





## Common snout fly *Rhingia campestris*

A stubby hoverfly with a distinct snout.





## White-bowed smoothwing *Scaeva pyrastris*

A large hoverfly that occurs widely, usually in small numbers. It is a common migrant.





## Yellow-barred pond fly *Sericomyia silentis*

A large hoverfly, common in boggy locations.







## *Sphaerophoria* sp

Female *Sphaerophoria* cannot be identified to species. This male is a 'short-bodied' *Sphaerophoria*; only males of the long-bodied hoverfly *Sphaerophoria scripta* can be easily identified to species from a photo.



## Common compost fly *Syrirta pipiens*

A tiny but common hoverfly, which often arrives as a migrant from across the North Sea. These are two males and a female (bottom right).





## Common flower fly *Syrphus ribesii*

Very common, but difficult to distinguish from other *Syrphus* species. These are females, which can be identified by the extent of yellow on the hind leg.





## Hairy-eyed flower fly *Syrphus torvus*

Very common, but difficult to distinguish from other *Syrphus* species. The hairs on the eye of this female identify it.



## Black-thighed flower fly *Syrphus vitripennis*

Common, but difficult to distinguish from *Syrphus torvus*. The apparent lack of hairs on the eye of this female suggests this species.





## Orange-belted leafwalker *Xylota segnis*

Widespread in small numbers in open woodland.