



Butterflies of the Howe of Fife

S.T. Buckland



Butterflies of the Howe of Fife

S.T. Buckland

I have included all species that I have been able to photograph in and around the Howe of Fife, which includes almost all species that are regularly recorded there.

Steve Buckland

steve@st-andrews.ac.uk

19/August/2022

Contents

Large white	4
Small white	5
Green-veined white	6
Orange tip	7
Purple hairstreak	8
Small copper	9
Common blue	10
Small pearl-bordered fritillary	11
Dark green fritillary	12
Red admiral	13
Painted lady	14
Small tortoiseshell	15
Peacock	16
Comma	17
Speckled wood	18
Meadow brown	19
Ringlet	20
Small heath	21



Large white

The least common of the three 'cabbage whites'.





Small white

Common especially in farmland, but appreciably less common than the green-veined white.





Green-veined white

Common wherever there is suitable habitat.





Orange tip

A late spring and early summer species, common in grassland.





Purple hairstreak

Adults typically fly high up in oak trees, and are difficult to photograph unless they land on vegetation low down. These images were taken with a telephoto lens.





Small copper

Small numbers occur at a number of locations in and around the Howe of Fife.





Common blue

Locally distributed in the Howe of Fife, but occurs where its food plant, bird's foot trefoil, is plentiful. These (male above, female below) were at Gaddon Loch.





Small pearl-bordered fritillary

This species is very scarce in the Howe of Fife. This one was at Auchtermuchty Common in early July 2022.





Dark green fritillary

Uncommon in the Howe of Fife. These were at Gaddon Loch in early July 2019.





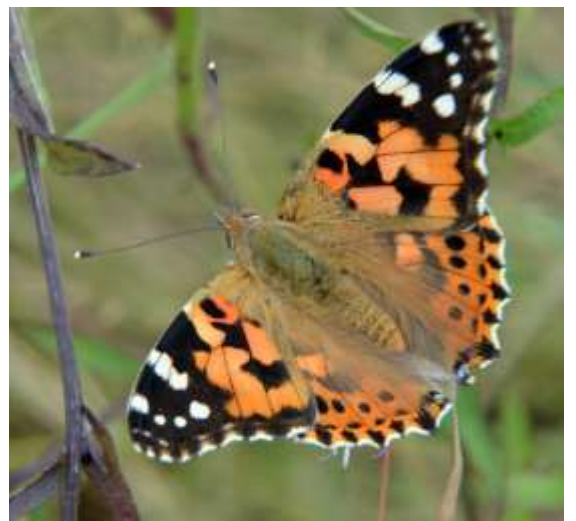
Red admiral

A common species especially in late summer.



Painted lady

A migrant species that sometimes arrives in Britain in large numbers. The above individual was at Edensmuir (Mountcastle), while the one below was at Gaddon Loch.





Small tortoiseshell

Common in suitable habitats.



Peacock

The peacock has spread north in recent years and is now one of the most common butterflies in Fife.



Comma

A distinctive species that has spread northwards into Fife. Occurs at Gaddon Loch and Cairnfield Muir.





Speckled wood

This species is currently colonising Fife. This one was at Heggie's Muir Wood by the Wilderness in mid-June 2022.



Meadow brown

A common species of grassland.





Ringlet

Another common grassland species.





Small heath

Common on grassy slopes of the Lomond Hills. The above image was taken near the car park at the top of the road passing between East and West Lomond. The image below shows one of several near Gaddon Loch in July 2019.

