



# Mosses of Bankhead Moss

S.T. Buckland

# Mosses of Bankhead Moss

S.T. Buckland

This guide shows some of the mosses that occur on the reserve. I am indebted to Alison Davies and Lyn Jones for identifying most of the species shown here. Without their help, I would have given up quickly!

Steve Buckland

[steve@st-andrews.ac.uk](mailto:steve@st-andrews.ac.uk)

1/May/2024

# Contents

<i>Aulacomnium palustre</i>	4	<i>Plagiothecium undulatum</i>	17
<i>Brachythecium rutabulum</i>	5	<i>Pleurozium schreberi</i>	18
<i>Campylopus introflexus</i>	6	<i>Polytrichum commune</i>	19
<i>Campylopus pyriformis</i>	7	<i>Polytrichum formosum</i>	20
		<i>Polytrichum juniperinum</i>	21
<i>Ceratodon purpureus</i>	8	<i>Polytrichum strictum</i>	22
<i>Dicranella heteromalla</i>	9	<i>Pseudoscleropodium purum</i>	23
<i>Dicranoweisia cirrata</i>	10	<i>Ptychomitrium polyphyllum</i>	24
<i>Dicranum scoparium</i>	11	<i>Rhytidiadelphus squarrosus</i>	25
<i>Hylocomium splendens</i>	12	<i>Sphagnum capillifolium</i>	26
		<i>Sphagnum contortum</i>	27
<i>Hypnum cupressiforme</i>	13	<i>Sphagnum cuspidatum</i>	28
		<i>Sphagnum fallax</i>	29
<i>Kindbergia praelonga</i>	14	<i>Sphagnum fimbriatum</i>	30
		<i>Sphagnum medium</i>	31
<i>Mnium hornum</i>	15	<i>Sphagnum palustre</i>	32
		<i>Sphagnum squarrosum</i>	33
<i>Orthodontium lineare</i>	16	<i>Sphagnum subnitens</i>	34
		<i>Tetraphis pellucida</i>	35





## Bog bead-moss *Aulacomnium palustre*

A species that occurs on bogs and wet heaths.







Rough-stalked feather-moss

*Brachythecium rutabulum*

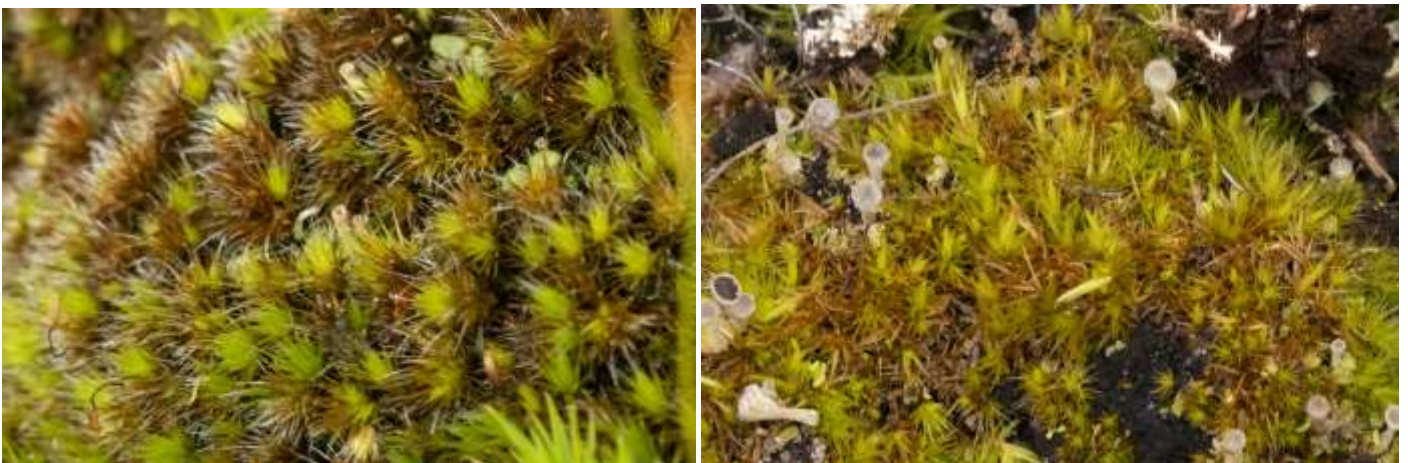
A common species in a range of habitats.



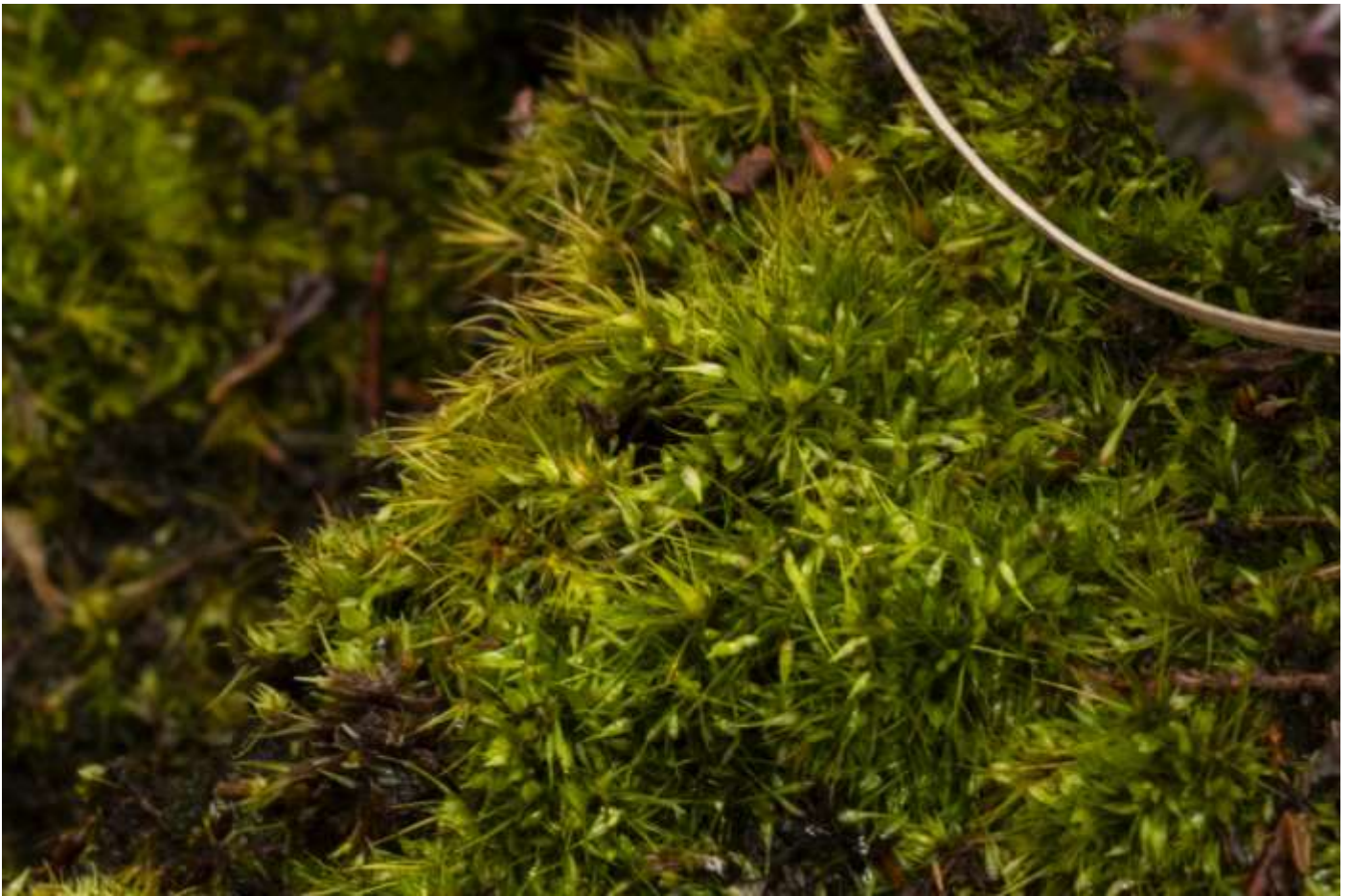


## Heath star moss *Campylopus introflexus*

This is a pioneer species on areas of bare peat. It was introduced from the Southern Hemisphere in the 1940s, and is now widespread.







Dwarf swan-neck moss *Campylopus pyriformis*

A moss of bare soils on damp heath.





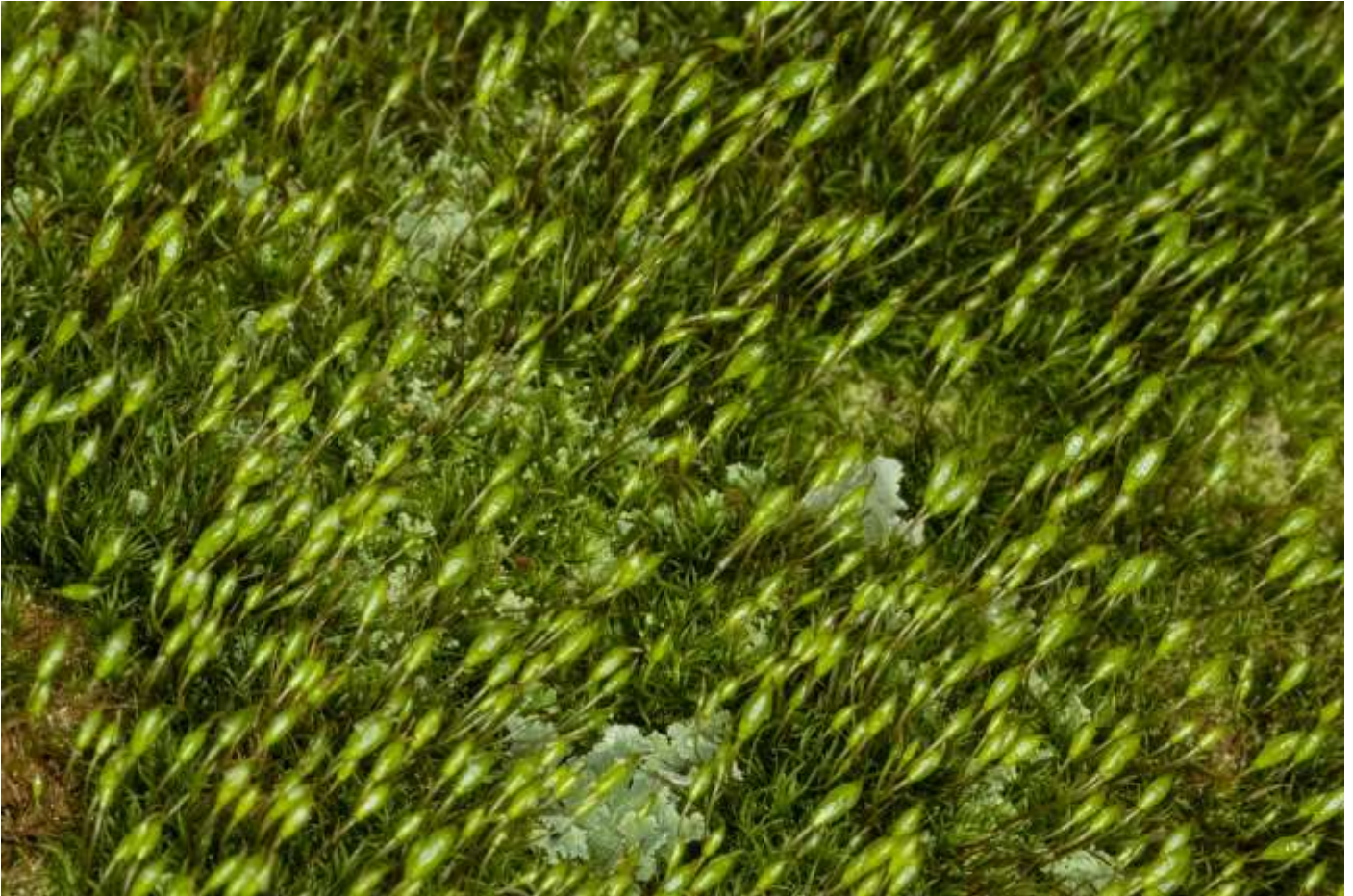


## Redshank *Ceratodon purpureus*

A very common species across a range of habitats with acidic substrates.







## Silky forklet-moss *Dicranella heteromalla*

A very common moss in acidic habitats.



## Common pincushion *Dicranoweisia cirrata*

A common species, occurring on rocks, posts and trees. This patch was a few feet outside the reserve, on the wall next to the access track.





## Broom fork-moss *Dicranum scoparium*

Very common in a wide range of habitats.







## Glittering wood-moss *Hylocomium splendens*

A common heathland species.





Cypress-leaved plait-moss *Hypnum cupressiforme*

Very common on bark and rock.





## Common feather-moss *Kindbergia praelonga*

Very common in a range of habitats. It often grows on a rotten log or a rock.







## Swan's-neck thyme-moss

### *Mnium hornum*

A common woodland species, often growing on decaying wood.







## Cape thread-moss *Orthodontium lineare*

An introduced species that tends to grow on vertical faces of logs or peat in acidic habitats.





## Waved silk-moss *Plagiothecium undulatum*

Mostly a species of woodland, growing on banks or dead wood.

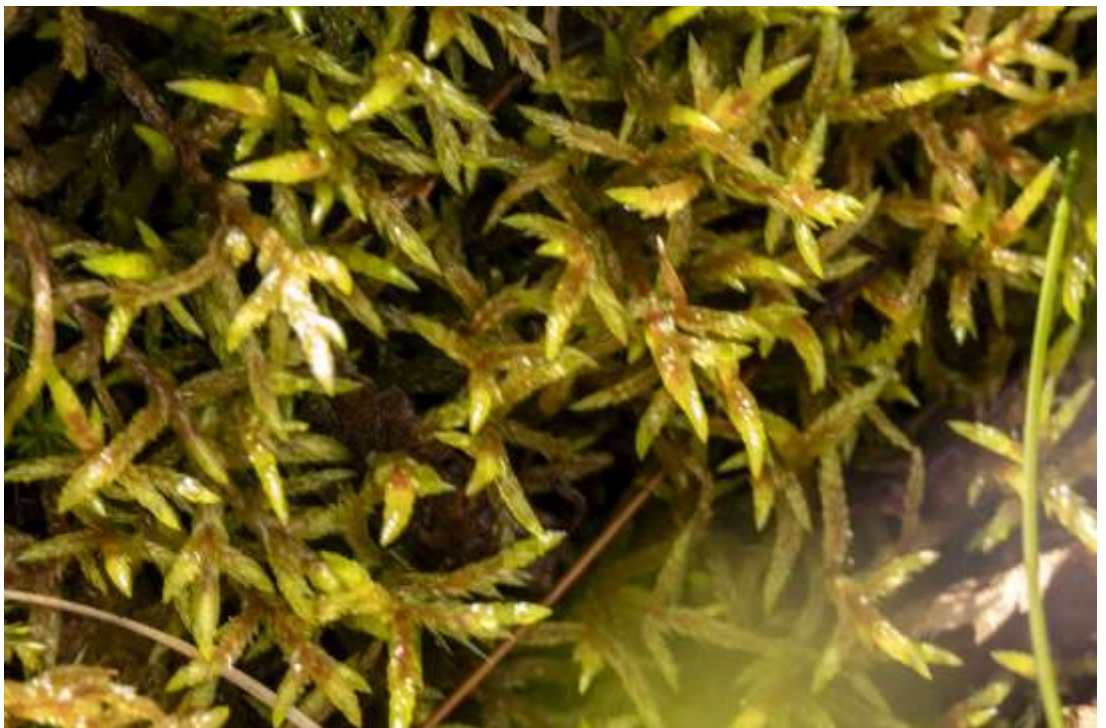






## Red-stemmed feather-moss *Pleurozium schreberi*

A common species of heathland and acidic woodland.







## Common haircap *Polytrichum commune*

A very common and obvious species of damp acidic habitats.







## Bank haircap *Polytrichum formosum*

This species occurs mostly in acidic woods and heaths.







Juniper haircap *Polytrichum juniperinum*

This moss tends to grow in dry acidic habitats.







## Strict haircap *Polytrichum strictum*

A local species, but common at Bankhead Moss. It prefers damp, deep deposits of peat.







## Neat feather-moss *Pseudoscleropodium purum*

A species that occurs in a wide range of habitats.



## Greater pincushion *Ptychomitrium polyphyllum*

An uncommon species in Fife, it grows on rocks. This one was a few feet outside the reserve boundary, on the wall alongside the access track.





## Springy turf-moss *Rhytidiadelphus squarrosus*

A very common species, usually occurring in grassland, although these patches were in the woodland at the reserve.







## Acute-leaved bog-moss *Sphagnum capillifolium*

A relatively common species of bogs, wet heathland and wet woodland.







Twisted bog-moss *Sphagnum contortum*

A scarce species of fens.







## Feathery bog-moss *Sphagnum cuspidatum*

Mostly in very damp habitats and bog pools, often submerged, although it can also occur in drier habitats.







## Flat-topped bog-moss *Sphagnum fallax*

Occurs in a wide range of wet habitats.







## Fringed bog-moss *Sphagnum fimbriatum*

Mostly a species of wet woodland.







## Magellanic bog-moss *Sphagnum medium*

This is a species of deep, wet peat in high quality mires. It is uncommon in Fife.







## Blunt-leaved bog-moss *Sphagnum palustre*

More tolerant of shade and increased nutrients than other *Sphagnum* mosses.







## Spiky bog-moss *Sphagnum squarrosum*

This species occurs in swampy ground with elevated nutrients. This patch was in the drainage ditch by the board walk, next to the style.





Lustrous bog-moss *Sphagnum subnitens*

Occurs in a wide range of wet habitats.







## Pellucid four-tooth moss *Tetraphis pellucida*

This small species occurs where soils are peaty, on banks, rocks and rotting wood.

