



# Micro-moths of the East Neuk

S.T. Buckland

# Micro-moths of the East Neuk

S.T. Buckland

I have included images of the species that I have been able to photograph in and around the East Neuk. My thanks go to Nigel Voaden for identifying the more difficult species—and some of the less difficult ones!

Steve Buckland

[steve@st-andrews.ac.uk](mailto:steve@st-andrews.ac.uk)

18/March/2024

# Contents—micro-moths

<i>Acleris emargana</i>	5	<i>Blastobasis adustella</i>	30	<i>Elachista argentella</i>	48
<i>Acleris laterana</i>	6	<i>Blastobasis lacticolella</i>	31	<i>Elophila nymphaeata</i>	49
<i>Acleris literana</i>	7	<i>Blastobasis vittata</i>	32	<i>Endothenia quadrimaculana</i>	50
<i>Acleris rhombana</i>	8	<i>Blastodacna hellerella</i>	33	<i>Endrosis sarcitrella</i>	51
<i>Acleris sparsana</i>	9	<i>Bryotropha affinis</i>	34	<i>Epermenia chaerophyllella</i>	52
<i>Acrobasis advenella</i>	10	<i>Caloptilia stigmatella</i>	35	<i>Epinotia abbreviana</i>	53
<i>Adela reaumurella</i>	11	<i>Catoptria falsella</i>	36	<i>Epinotia brunnichana</i>	54
<i>Aethes cnicana</i>	12	<i>Cauchas rufimitrella</i>	37	<i>Epinotia immundana / tetraquetra</i>	55
<i>Aethes rubigana</i>	13	<i>Celypha lacunana</i>	38	<i>Epinotia nisella</i>	56
<i>Agapeta hamana</i>	14	<i>Chrysoteuchia culmella</i>	39	<i>Epinotia ramella</i>	57
<i>Agonopterix alstromeriana</i>	15	<i>Cnephasia asseclana</i>	40	<i>Epinotia tenerana</i>	58
<i>Agonopterix arenella</i>	16	<i>Cnephasia incertana</i>	41	<i>Epinotia trigonella</i>	59
<i>Agonopterix heracliana</i>	17	<i>Cnephasia longana</i>	42	<i>Epiphyas postvittana</i>	60
<i>Agonopterix nervosa</i>	18	<i>Coleophora sp.</i>	43	<i>Esperia sulphurella</i>	61
<i>Agonopterix ocellana</i>	19	<i>Crambus lathoniellus</i>	44	<i>Eucosma cana</i>	62
<i>Agriphila straminella</i>	20	<i>Cydia fagiglandana</i>	45	<i>Eudonia lacustrata</i>	63
<i>Agriphila tristella</i>	21	<i>Depressaria radiella</i>	46	<i>Eudonia mercurella</i>	64
<i>Aleimma loeflingiana</i>	22	<i>Diurnea fagella</i>	47	<i>Eudonia truncicolella</i>	65
<i>Anania hortulata</i>	23			<i>Glyphipterix simpliciella</i>	66
<i>Anthophila fabriciana</i>	24			<i>Gracillaria syringella</i>	67
<i>Aphomia sociella</i>	25			<i>Grapholita janthinana</i>	68
<i>Apotomis betuletana</i>	26			<i>Hedya nubiferana</i>	69
<i>Argyresthia bonnetella</i>	27			<i>Hofmannophila pseudospretella</i>	70
<i>Argyresthia conjugella</i>	28			<i>Hypsopygia glaucinalis</i>	71
<i>Argyresthia goedartella</i>	29				

# Contents—micro-moths

<i>Metzneria lappella</i>	72	<i>Pammene aurana</i>	85	<i>Thyraylia nana</i>	96
<i>Metzneria metzneriella</i>	73	<i>Pandemis cerasana</i>	86	<i>Tinea semifulvella</i>	97
<i>Micropterix aruncella</i>	74	<i>Pandemis heparana</i>	87	<i>Tortricodes alternella</i>	98
<i>Mompha conturbatella</i>	75	<i>Patania ruralis</i>	88	<i>Udea ferrugalis</i>	99
<i>Mompha propinquella</i>	76	<i>Platyptilia gonodactyla</i>	89	<i>Udea lutealis</i>	100
<i>Nemapogon cloacella</i>	77	<i>Plutella xylostella</i>	90	<i>Udea olivalis</i>	101
<i>Nematopogon schwarziellus</i>	78	<i>Prays fraxinella / ruficeps</i>	91	<i>Yponomeuta cagnagella</i>	102
<i>Niditinea fuscella</i>	79	<i>Pseudargyrotoza</i>		<i>Yponomeuta evonymella</i>	103
<i>Nomophila noctuella</i>	80	<i>conwagana</i>	92	<i>Ypsolopha dentella</i>	104
<i>Notocelia cynosbatella</i>	81	<i>Scoparia ambigualis</i>	93	<i>Ypsolopha parenthesesella</i>	105
<i>Notocelia trimaculana</i>	82	<i>Stenoptilia pterodactyla</i>	94	<i>Ypsolopha ustella</i>	106
<i>Notocelia uddmanniana</i>	83	<i>Syndemis musculana</i>	95	<i>Zeiraphera isertana</i>	107
<i>Nymphula nitidulata</i>	84			<i>Zelleria hepariella</i>	108
				<i>Zelotherses paleana</i>	109



## Scalloped tortrix *Acleris emargana*

A fairly common species, found mostly in woodland.







## Dark-marked tortrix *Acleris laterana*

A common woodland species.





## Lichen tortrix *Accleris literana*

A scarce species of oak woodland. These were at Keil's Den in May 2023.







## Rhomboid tortrix *Acleris rhombana*

A scarce species in Fife, occurring mostly in hedgerows and scrub. These were at Fleecefaulds in late August and mid-September 2023.







## Lead-coloured tortrix *Acleris sparsana*

A common species of woodland and gardens, from late summer into winter.





## Hawthorn knot-horn *Acrobasis advenella*

A fairly common species in Fife, occurring where hawthorn is available.







## Green longhorn *Adela reaumurella*

A scarce species in Fife. The male (above) was one of several at Cameron Reservoir, while the female was at Fleecefaulds.







## Thistle straw *Aethes cnicana*

A common species in areas with thistles.





## Burdock straw *Aethes rubigana*

Much less common than *Aethes cnicana*, and associated with burdock.







## Garden straw *Agapeta hamana*

A common species anywhere that thistles grow.







## Hemlock moth *Agonopterix alstromeriana*

An uncommon species in Fife, occurring mostly in coastal habitats. The one above was at Magus Muir in mid-March 2024, and the one below was at Lower Kilminning in early October 2023.





## Brindled buff *Agonopterix arenella*

A common species that occurs almost throughout the year, over-wintering as an adult.







Common brindled brown  
*Agonopterix heracliiana*

A very common species that often overwinters in garages, garden sheds and woodsheds.







## Burnt-tip buff *Agonopterix nervosa*

A common species in areas with gorse or broom. These were at Fleecefaulds.





## Red-eyed buff *Agonopterix ocellana*

A fairly common species of damp habitats. These were at Keil's Den in spring 2023.







## Straw grass-moth *Agriphila straminella*

An abundant grass moth.





## Common grass-moth *Agriphila tristella*

An abundant grass moth.







## Yellow oak tortrix *Aleimma loeflingiana*

A rare species in Fife. Its main foodplant is the oak. This one was at Fleecefaulds in late July 2023. It is only the third location in Fife where the species has been recorded.





## Small magpie *Anania hortulata*

A fairly common moth where nettles grow. This one was at Keil's Den.







## Nettle-tap *Anthophila fabriciana*

A very common day-flying moth, occurring wherever nettles grow.





## Bee moth *Aphomia sociella*

A common moth whose caterpillars feed on debris and larvae in bee and wasp nests.







## Birch marble *Apotomis betuletana*

This species is associated with birch trees. It is not widely recorded in Fife. These were at Bankhead Moss.





## Hawthorn tip moth *Argyresthia bonnetella*

Occurs where hawthorns grow.







## Apple fruit moth *Argyresthia conjugella*

Common where apple or rowan trees grow.



Brassy Y

*Argyresthia goedartella*

Common wherever birches or alders grow.







## Common masoner *Blastobasis adustella*

A common summer and autumn species.





Large pale masoner

*Blastobasis lacticolella*

A common species that is increasing its range.







## Dotted masoner *Blastobasis vittata*

A very recent arrival in Scotland. First recorded at Burntisland, it has been spreading along the coast. The one below left was at Lower Kilminning in mid-November 2022, while the others were at Keil's Den in mid-July 2023.





## Hawthorn berry moth *Blastodacna hellerella*

A scarce species in Scotland. Its food plants are hawthorn and whitebeam. This one was at Fleecefaulds in early July 2023.







Dark moss-moth

*Bryotropa affinis*

A locally-distributed species. Its caterpillars feed on mosses.





Willow stilt *Caloptilia stigmatella*

This is a common species of woodland where willows grow.







## Chequered grass-moth *Catoptria falsella*

A locally-distributed species associated with mosses. This rather worn one was at Keil's Den in late August.





## Meadow longhorn *Cauchas rufimitrella*

Not widely recorded in Fife, this day-flying species occurs in damp grasslands. This one was at Cameron Reservoir in early June.







## Common marble *Celypha lacunana*

A very common species in a range of habitats.





## Garden grass-moth *Chrystoteuchia culmella*

A very common grass moth, occurring in grasslands throughout.







## Flax tortrix *Cnephasia asseclana*

A common summer species.





Light grey tortrix *Cnephasia incertana*

A common summer species.







## Buff grey tortrix *Cnephasia longana*

Sparsely distributed in Fife, and seldom recorded elsewhere in Scotland. These were at Keil's Den in mid-August 2023.





## *Coleophora* sp.

There are many species of *Coleophora*, and most are like these, in that they cannot be identified to species from photos.







## Meadow grass-moth *Crambus lathoniellus*

A common grass moth.





## Beech mast piercer *Cydia fagiglandana*

An uncommon species in Fife. These were at Keil's Den, only the third location in Fife where the species has been recorded. The foodplant of the caterpillars is beech.







## Parsnip moth *Depressaria radiella*

A common species that can be encountered through much of the year where common hogweed or wild parsnip grows.







## Early reveller *Diurnea fagella*

A common spring moth in deciduous woodland.







## Silver grass-miner *Elachista argentella*

A fairly common grassland species.





## Brown china-mark *Elophila nymphaeata*

A fairly local species in Fife, occurring in wet habitats. These were at Bankhead Moss.







Marsh marble *Endothenia quadrimaculana*

A locally-distributed species of damp habitats.





## White-shouldered house-moth *Endrosis sarcitrella*

Very common, and familiar as a 'clothes moth'.







## Common ridge-back *Epermenia chaerophyllella*

A tiny moth that is common, occurring in a range of habitats.







## Brown elm tortrix *Epinotia abbreviana*

A species that is not recorded frequently in Fife. It is associated with elm trees. These were at Keil's Den in late June and mid-July 2023.







*Large birch roller Epinotia brunnichana*

Another woodland species that is not often recorded in Fife. This one was at Keil's Den in mid-July 2023.





Birch tortrix / birch-borer tortrix

*Epinotia immundana* / *Epinotia tetraquetra*

Both species occur in damp habitats with birches or alders. This one was at Bankhead Moss in late May.







## Brindled poplar tortrix *Epinotia nisella*

A common species where willows or poplars grow.





## Black-marked tortrix

### *Epinotia ramella*

A variable species of birch woodland. Around 80 were recorded at Bankhead Moss in August 2023, when the images above and below were taken.







## Nut bud moth *Epinotia tenerana*

A woodland species associated with hazel and alder, not widely recorded in Fife. This one was at Bankhead Moss.





## White-blotched roller *Epinotia trigonella*

A species of birch woodland. This one was at Bankhead moss.





## Light brown apple-moth *Epiphyas postvittana*

An Australian species that has spread through much of the British Isles. It is scarce in Fife. The ones above and below left were at Lower Kilminning in October 2023, and the one below right was at Keil's Den in late August 2023.





## Sulphur bark moth *Esperia sulphurella*

An attractive woodland species. This male was at Keil's Den in early May 2023.







## Hoary tortrix *Eucosma cana*

A common species where thistles or knapweed grow.







## Tawny grey *Eudonia lacustrata*

A common species in woodland and open habitats.







## Garden grey *Eudonia mercurella*

A fairly common species, associated with mosses.





## Peppered grey *Eudonia truncicolella*

A fairly common species, mostly in woodland and heathland.



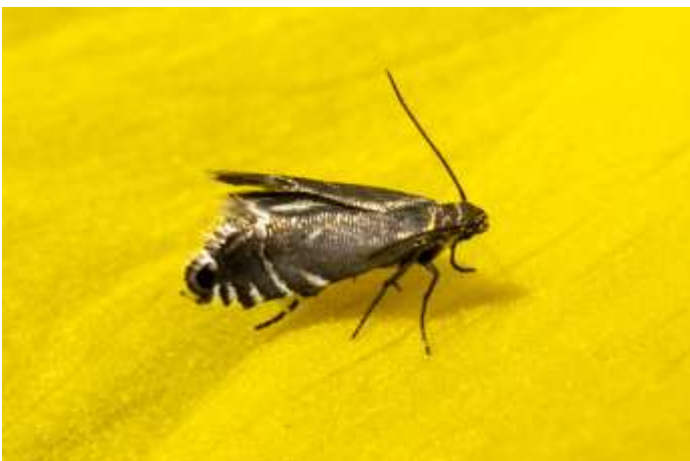




Cocksfoot moth

*Glyphipterix simplicella*

A tiny and very abundant moth of grassland.







## Garden stilt *Gracillaria syringella*

A common woodland species. This one was at Bankhead Moss.







## Hawthorn piercer *Grapholita janthinana*

A rare species in Fife. The one above was at Fleecefaulds on 20 June 2023, while the one below was at Keil's Den on 16 July 2023.





## Marbled orchard tortrix *Hedya nubiferana*

This species occurs in areas with hawthorn or blackthorn. It can be fairly common in suitable habitat.







Brown house-moth *Hofmannophila pseudospretella*

A common species, often found inside sheds and garages.





## Double-striped tabby *Hypsopygia glaucinalis*

A southern species that has only recently arrived in Fife. This one was at Keil's Den in late August 2023.







## Burdock seedhead moth *Metzneria lappella*

A species recorded from very few locations in Fife. The one above was at Fleecefaulds on 20 June 2023, the first record from east Fife, the one below left at Keil's Den a few days later, and the one below right at Bankhead Moss on 7 July 2023.





## Knapweed seedhead moth *Metzneria metzneriella*

A scarce species in Fife.





## White-line pollen-moth

### *Micropterix aruncella*

A tiny species that can be common in grassland and woodland. It can appear anything from black to golden depending on the light. Males (right) have two white stripes.





## Great mompha *Mompha conturbatella*

This species is associated with rosebay willowherb. This one was at Keil's Den in mid-July.





## White-headed mompha *Mompha propinquella*

A locally-distributed species in Fife. Its caterpillars feed on willowherb. This one was at Bankhead Moss in early July.







## Cork moth *Nemapogon cloacella*

A fairly common woodland species whose caterpillars feed in bracket fungi. These were at Keil's Den and Bankhead Moss.







## Sandy longhorn *Nematopogon schwarziellus*

Mostly a woodland species. Scarce in Fife, these were at Keil's Den in late May and early June 2023.





## Brown-dotted nest moth *Niditinea fuscella*

Identification uncertain! This species has never been positively identified in Fife. This worn individual was at Keil's Den on 24 June 2023.







## Rush veneer *Nomophila noctuella*

A migrant in small numbers and mostly a coastal species in Fife.





## Black cloak *Notocelia cynosbatella*

A fairly common species in Fife. The caterpillars feed on wild or cultivated roses.







## Hawthorn shoot moth *Notocelia trimaculana*

A locally-distributed species in Fife, occurring where hawthorns grow. These were at Keil's Den.





## Bramble shoot moth *Notocelia uddmanniana*

A rare species in Fife, occurring where brambles grow. This one was at Keil's Den in mid-July 2023.





## Beautiful china-mark *Nymphula nitidulata*

A locally-distributed species. This one was at Bankhead Moss in June 2023.





## Double orange-spot *Pammene aurana*

A locally-distributed species in Scotland, which can be seen on hogweed flowers in daylight. This one came to light at Fleecefaulds in June 2023.





## Barred fruit-tree tortrix *Pandemis cerasana*

A common species. Its caterpillars feed on fruit trees, but also a range of other deciduous trees.





## Dark fruit-tree tortrix *Pandemis heparana*

A common species. Its caterpillars feed on fruit trees, but also a range of other deciduous trees.







## Mother of pearl *Patania ruralis*

A common species, especially where nettles grow.





## Triangle plume *Platyptilia gonodactyla*

A species of rough grassland that is sparsely distributed in east Fife. These were at Fleecefaulds in June 2023.







## Diamond-back moth

### *Plutella xylostella*

This moth is a frequent migrant, and can occur almost anywhere.





Ash bud moth / cryptic ash bud moth

*Prays fraxinella* / *ruficeps*

Two species associated with ash that can only be separated by genetic testing.







Yellow-spotted tortrix *Pseudargyrotoza conwagana*

A fairly common woodland species. These were at Keil's Den.





## Common grey *Scoparia ambigualis*

Common across a range of habitats.







Brown plume

*Stenoptilia pterodactyla*

A locally-distributed species in Scotland.  
These were at Fleecefaulds and Keil's Den.





## Dark-barred tortrix *Syndemus musculana*

A common woodland species.







## Birch straw *Thyraylia nana*

There are just three old records of this tiny moth in Fife, and this is the first record with images, so that identity can be confirmed. It occurs in birch woodland, and this one was at Bankhead Moss in early June 2023.





## Orange-tipped nest moth *Tinea semifulvella*

A fairly common species in a range of habitats. Its caterpillars are usually found in bird nests, feeding on the debris.







## Spring harbinger *Tortricodes alternella*

A woodland species, scarce in Fife. These were at Keil's Den in late January 2023.







## Rusty-dot pearl *Udea ferrugalis*

A migrant species, seldom recorded in Fife. This was one of three at Lower Kilminning in late October 2023.







## Pale straw pearl *Udea lutealis*

A common species, often seen during the day.





## Garden pearl *Udea olivalis*

A fairly common species in a range of lowland habitats.







## Spindle ermine *Yponomeuta cagnagella*

Although this species cannot be separated from *Yponomeuta padella* and *Yponomeuta malinellus* from images of the adult, this moth was next to spindle bushes that had been covered in webs and stripped by spindle ermine caterpillars.



## Bird-cherry ermine *Yponomeuta evonymella*

A common species. Its caterpillars form webs on bird cherry, often stripping the trees of leaves completely.







## Honeysuckle moth *Ypsolopha dentella*

A common species where its foodplant occurs.





White-shouldered ochre

*Ypsolopha parenthesesella*

A woodland species not often recorded in the eastern half of Fife. These were at Bankhead Moss, apart from the one on the right, which was at Keil's Den.







## Varied ochre *Ypsolopha ustella*

A common species of oak woodland. Its markings are highly variable. These were at Keil's Den.





## Mottled oak tortrix *Zeiraphera isertana*

This is the first record of this species from east Fife. It was at Fleecefaulds in early July 2023. Its caterpillars feed on oak leaves.







## Ash spinner *Zelleria hepariella*

A rare species in Fife, with only a handful of records. This one was at Keil's Den in mid-August 2023.





## Timothy tortrix *Zelothereses paleana*

A fairly common grassland species.