



Macro-moths of the Howe of Fife

S.T. Buckland

Macro-moths of the Howe of Fife

S.T. Buckland

I have included images of the species that I have been able to photograph in and around the Howe of Fife, including the high ground that largely surrounds the Howe. My thanks go to Nigel Voaden for identifying the more difficult species — and some of the less difficult ones!

Steve Buckland

steve@st-andrews.ac.uk

3/May/2024

Contents

Angle shades	5	Common heath	47	Garden carpet	90
Anomalous	6	Common marbled carpet	48	Garden tiger	91
Antler moth	7	Common pug	49	Ghost moth	92
Autumnal moth	8	Common quaker	50	Gold spot	93
Autumnal rustic	9	Common rustic	51	Gold swift	94
		Common swift	52	Golden-rod pug	95
Barred chestnut	10	Common wainscot	53	Grass rivulet	96
Barred red	11	Common wave	54	Green arches	97
Barred straw	12	Common white wave	55	Green-brindled crescent	98
Barred yellow	13	Copper underwing	56	Green carpet	99
Beautiful golden Y	14	Coxcomb prominent	57	Green pug	100
Black rustic	15	Crescent	58	Green silver-lines	101
Blair's shoulder knot	16	Currant pug	59	Grey dagger	102
Blue-bordered carpet	17			Grey pine carpet	103
Bordered white	18	Dark arches	60	Grey pug	104
Brick	19	Dark chestnut	61		
Bright-line brown-eye	20	Dark marbled carpet	62	Heart and club	105
Brimstone moth	21	Dark sword-grass	63	Heart and dart	106
Brindled pug	22	December moth	64	Heath rustic	107
Broad-bordered yellow		Dotted border	65	Hebrew character	108
underwing	23	Dotted clay	66	Hedge rustic	109
Broom moth	24	Dotted rustic	67	Herald	110
Brown-line bright-eye	25	Double dart	68	Hummingbird hawkmoth	111
Brown rustic	26	Double square-spot	69		
Brown silver-line	27	Double-striped pug	70	Ingrailed clay	112
Brown-spot pinion	28	Dun-bar	71	Iron prominent	113
Buff footman	29	Dusky brocade	72		
Bulrush wainscot	30	Dwarf pug	73	July belle	114
Burnished brass	31			July highflyer	115
Butterbur	32	Ear moth	74	Juniper pug	116
		Early grey	75		
Canary-shouldered thorn	33	Early thorn	76	Knot grass	117
Centre-barred sallow	34	Early tooth-striped	77		
Chestnut	35	Elephant hawkmoth	78	Large ear	118
Chevron	36	Emperor moth	79	Large emerald	119
Chimney sweeper	37	Engrailed	80	Large wainscot	120
Cinnabar	38			Large yellow underwing	121
Clay	39	Fan-foot	81	Latticed heath	122
Cloaked minor	40	Feathered thorn	82	Least black arches	123
Clouded border	41	Flame	83	Lempke's gold spot	124
Clouded-bordered brindle	42	Flame carpet	84	Lesser broad-bordered	
Clouded drab	43	Flame shoulder	85	yellow underwing	125
Clouded silver	44	Flounced rustic	86	Lesser swallow prominent	126
Common carpet	45	Foxglove pug	87		
Common footman	46	Freyer's pug	88		
		Frosted orange	89		

Contents

Lesser yellow underwing	127	Pine beauty	168	Small dotted buff	211
Light arches	128	Pine carpet	169	Small dusty wave	212
Light emerald	129	Pinion-streaked snout	170	Small elephant hawk-moth	213
Lime-speck pug	130	Pink-barred sallow	171	Small fan-foot	214
Lunar thorn	131	Plain golden Y	172	Small fan-footed wave	215
Lunar underwing	132	Poplar hawkmoth	173	Small phoenix	216
Lychnis	133	Powdered quaker	174	Small quaker	217
		Purple bar	175	Small rivulet	218
Magpie moth	134	Purple clay	176	Small square-spot	219
Map-winged swift	135			Smoky wainscot	220
Marbled beauty	136	Red chestnut	177	Snout	221
Marbled coronet	137	Red-green carpet	178	Spectacle	222
Marbled minor	138	Red-line quaker	179	Spruce carpet	223
March moth	139	Red sword-grass	180	Square-spot rustic	224
May highflyer	140	Riband wave	181	Straw dot	225
Merveille du jour	141	Rivulet	182	Streak	226
Middle-barred minor	142	Rosy rustic	183	Streamer	227
Mother shipton	143	Ruby tiger	184	Suspected	228
Mottled beauty	144	Rustic	185	Swallow prominent	229
Mottled grey	145	Rustic shoulder-knot	186	Swallow-tailed moth	230
Mottled pug	146			Sword-grass	231
Mottled rustic	147	Sallow	187		
Mottled umber	148	Sandy carpet	188	Tawny-barred angle	232
Mouse moth	149	Satellite	189	Triple-spotted clay	233
Muslin footman	150	Satin beauty	190	True lover's knot	234
		Scalloped hazel	191	Turnip moth	235
Narrow-winged pug	151	Scalloped oak	192	Twin-spot carpet	236
Netted pug	152	Scarce umber	193	Twin-spotted quaker	237
Northern spinach	153	Scotch annulet	194		
November moth	154	Seraphim	195	Uncertain	238
Nut-tree tussock	155	Setaceous hebrew character	196		
		Shaded broad-bar	197	V-pug	239
Oak nycteoline	156	Shears	198		
Oblique carpet	157	Shoulder stripe	199	Water carpet	240
Ochreous pug	158	Shoulder-striped wainscot	200	White ermine	241
Orange swift	159	Shuttle-shaped dart	201	White-line dart	242
		Silver-ground carpet	202	Willow beauty	243
Pale brindled beauty	160	Silver Y	203	Winter moth	244
Pale November moth	161	Single-dotted wave	204	Wood tiger	245
Pale pinion	162	Six-spot burnet	205	Wormwood pug	246
Pale prominent	163	Six-striped rustic	206		
Pale-shouldered brocade	164	Slender brindle	207	Yellow-barred brindle	247
Pebble prominent	165	Sloe pug	208	Yellow horned	248
Peppered moth	166	Small angle shades	209	Yellow-line quaker	249
Phoenix	167	Small clouded brindle	210	Yellow shell	250



Angle shades

A common summer species in a range of habitats.





Anomalous

A common summer species in a range of habitats.





Antler moth

A common grassland species.





Autumnal moth

A woodland species that is very similar to the November and pale November moths.





Autumnal rustic

A common but declining species of open habitats.





Barred chestnut

A locally-distributed species of broad-leaved woodland and moorland.



Barred red

Common, especially in conifer plantations.





Barred straw

A common species of hedgerows and gardens.





Barred yellow

A common species of open woodland and gardens.





Beautiful golden Y

A common summer species in a range of habitats.





Black rustic

A common autumn species.





Blair's shoulder-knot

Occurs where cypress trees grow. It was first recorded in the UK in 1951, and it has since spread northwards from the south of England. It only recently arrived in Fife. This one was at Kedlock Feus in October 2021.





Blue-bordered carpet

Sparsely distributed in Fife, occurring mostly where alders grow. This one was at Kedlock Feus in mid-August 2022.



Bordered white

A common species where mature conifers occur.





Brick

An autumn species of broad-leaved woodland, not numerous in Fife. The one below right was at Letham, while the others were at Kedlock Feus.





Bright-line brown-eye

Common in a variety of habitats.





Brimstone moth

A common species in a variety of habitats.





Brindled pug

A common species, appearing earlier in the year than most pugs.





Broad-bordered yellow underwing

A widespread species of broadleaf woodland that is never numerous.





Broom moth

A common species of open habitats.





Brown-line bright-eye

A common grassland species.





Brown rustic

A common species, especially in broadleaf woodland.





Brown silver-line

A common species where bracken occurs.





Brown-spot pinion

A common species of woodland, heathland, hedgerows and gardens.





Buff footman

A southern species that recently arrived in Fife. Not widespread, but is now locally common, for example at Tentsmuir. This one was at Kedlock Feus.





Bulrush wainscot

Relatively common in areas with bulrushes.





Burnished brass

A common species where nettles occur.





Butterbur

An uncommon species, mostly restricted to large patches of its foodplant, butterbur. The one above and below was on the river bank near Kilmany on 27 Aug 2021, while the one on the right was at Kedlock Feus on 18 Aug 2022.





Canary-shouldered thorn

A common species of woodland and gardens.





Centre-barred sawfly

A locally-distributed species of broad-leaved woodland and other habitats where ash occurs.





Chestnut

A common winter-flying species.





Chevron

Locally-distributed in a range of open habitats in Fife.





Chimney sweeper

Fairly common in suitable habitat. These were at Clatto Reservoir (above) and Auchtermuchty Common (below).





Cinnabar

This day-flying moth is most common in coastal areas, but is increasingly recorded from inland sites.





Clay

Common in a range of open habitats.





Cloaked minor

A locally-distributed grassland species that occurs mostly at or near the coast. The one above was at Black Craig near Norman's Law in early July 2023, while the one below was at Kedlock Feus in late July 2021.





Clouded border

A common species of woodland and heathland.





Clouded-bordered brindle

A common species varying from light to dark, which occurs in a range of habitats.





Clouded drab

A common spring species.





Clouded silver

This is a southern species that has been rapidly spreading north, and is now sparsely-distributed in Fife. These were at Kedlock Feus in May and June 2022.





Common carpet

A common species, often occurring in gardens.





Common footman

A scarce species in Fife, not often seen inland. This one was at Kedlock Feus in late July 2023.





Common heath

A common moorland species. This was one of several by the path from Craigmead to East Lomond.



Common marbled carpet

A common species with variable markings, which occurs in a range of habitats.





Common pug

A common species occurring in a range of habitats.





Common quaker

A common spring species.





Common rustic

A common and very variable species of grasslands. Identity not certain, as it cannot be distinguished from the lesser common rustic from photos.





Common swift

The common swift is close to the northern edge of its UK range in Fife.





Common wainscot

Despite its name, this is a locally-distributed species in Fife. These individuals were at Kedlock Feus in early July 2021.





Common wave

A common species of wet woodland.





Common white wave

A common woodland species.





Copper underwing

A southern species that has recently spread to Fife. It occurs in woodland, hedgerows and gardens.





Coxcomb prominent

A fairly common woodland species that also occurs in gardens.





Crescent

Mostly a migrant moth in small numbers in Fife. This one was at Kedlock Feus in mid-September 2021.





Curren pug

A common species in gardens and woodland.





Dark arches

A large species, common in a wide range of habitats in summer.





Dark chestnut

A southern species that has only been recorded in Fife three or four times. This one was at Kedlock Feus in mid-November 2021, the first record for the area covered here.





Dark marbled carpet

A common species, found mostly in woodland and moorland.





Dark sword-grass

A migrant moth in small numbers, mostly coastal. This one was at Kedlock Feus in mid-October 2021.





December moth

A common species of woods, hedges and gardens.





Dotted border

A common species in late winter and spring. These are all males, which vary in appearance, but always with dots along the wing edges. The females are flightless.





Dotted clay

A common species in a variety of habitats.





Dotted rustic

A locally-distributed species of open country. Relatively little is known about it.



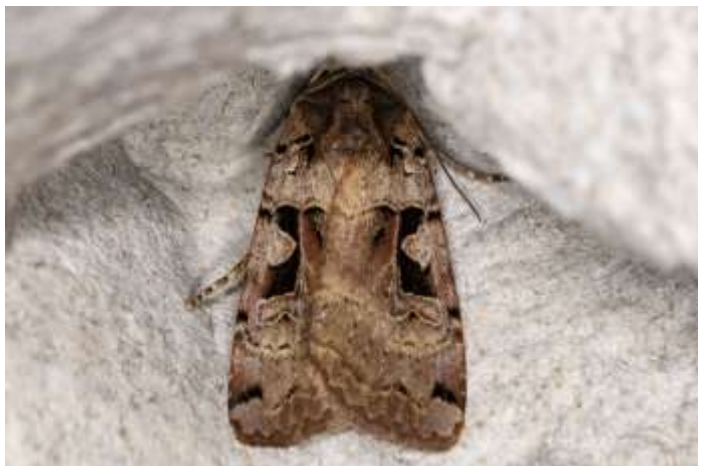
Double dart

A declining species of broadleaved woodland. This one was at Gaddon Loch in late June 2022.



Double square-spot

A common species in a variety of rural habitats.





Double-striped pug

A common species in a range of habitats.





Dun-bar

A common species of woodland, hedgerows and gardens.





Dusky brocade

Widespread in grassy habitats.





Dwarf pug

A fairly common pug, mostly in conifer plantations.





Ear moth

Although mostly a coastal species in Fife, these were on Black Craig near Norman's Law.





Early grey

A spring species that is common further south and west but fairly scarce in Fife.





Early thorn

A common species that first appears quite early in the year.





Early tooth-striped

A spring species that occurs in damp broadleaved woodland, especially where willows grow.





Elephant hawkmoth

A large, attractive moth that is relatively common.





Emperor moth

An impressive moth that is common in suitable habitat. This male was on the east slopes of East Lomond in April 2021.





Engrailed

A fairly common species in broadleaved woodland.





Fan-foot

A locally-distributed species of woodland, scrub and gardens in Fife.





Feathered thorn

A locally-distributed species of broadleaved woodland.





Flame

A common species in a range of habitats in Scotland.





Flame carpet

A common species in a range of habitats in Scotland.





Flame shoulder

Common in a range of habitats.





Flounced rustic

A fairly common species of grassy habitats.





Foxglove pug

Common wherever foxgloves grow.





Freyer's pug

Fairly widespread but not common in Fife. These were at Kedlock Feus in mid-June 2023.





Frosted orange

A common species of rough grassland.





Garden carpet

A common species, especially in gardens.





Garden tiger

Common in open habitats.





Ghost moth

A large and quite common species. Males appear to glow and swing like a pendulum in the air when trying to attract females. Male above and below right, female below left.





Gold spot

A locally-distributed species in Fife, occurring mostly in damp habitats.





Gold swift

A locally-distributed species of open woodland. This male was at Kedlock Feus in mid-July 2021.





Golden-rod pug

A locally-distributed species, although it can occur in a wide range of habitats.





Grass rivulet

A relatively local species but can be numerous at Auchtermuchty Common, where these photos were taken.





Green arches

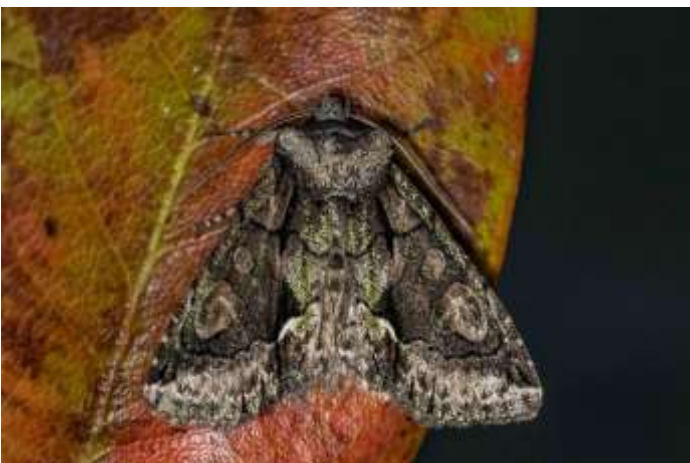
A fairly common species of broadleaved woodland.





Green-brindled crescent

A common species of broadleaved woodland, hedgerows and gardens.





Green carpet

A common species in a range of habitats.





Green pug

A common species where apple trees occur.





Green silver-lines

An attractive species of broadleaved woodland, uncommon in Fife. This one was at Kedlock Feus in mid-May 2023.





Grey dagger

Widely distributed through a variety of habitats.





Grey pine carpet

A common species of coniferous woodland and gardens.





Grey pug

Common in a range of habitats.





Heart and club

A scarce species in Fife, and occurring mostly on coastal dunes. The one above was at Gaddon Loch in late June 2022, while the one below was one of two at Kedlock Feus in early July 2022.





Heart and dart

A widespread species, occupying most habitats.





Heath rustic

A locally-distributed species of heath and moorland. This was one of several recorded at Black Craig by Norman's Law.





Hebrew character

A common spring species.





Hedge rustic

A scarce grassland species that has seen large declines in recent decades. These were at Black Craig by Norman's Law.





Herald

Locally-distributed in Fife, occurring where willows or poplars grow. The hibernating moths below were among 27 hibernating in the tunnel at the bottom of Maspie Den by Falkland in December 2021.





Hummingbird hawkmoth

A rare migrant to the Howe of Fife from southern Europe and northern Africa. This individual was at Kedlock Feus on 24 July 2019.



Ingrailed clay

A common species, mostly on moorland.





Iron prominent

Occurs in broadleaved woodland and heathland where birches or alders grow.





July belle

A locally-distributed species, mostly on heathland and moorland. This one was at Gaddon Loch in late June 2022.





July highflyer

A common woodland and moorland species.





Juniper pug

A fairly common species that has expanded its range because of the planting of junipers in gardens.



Knot grass

Widely-distributed but scarce in Fife. This one was at Elmwood Golf Course in late June 2022.





Large ear

A locally-distributed species of moorland and marsh. This one was at Kedlock Feus in late August 2021.





Large emerald

A common species of woodland and grassland.





Large wainscot

Locally-distributed in Fife, occurring in areas with reeds.





Large yellow underwing

A common resident and migrant.





Latticed heath

A relatively scarce species in Fife. The above one was at Clatto Reservoir in mid-July 2019, while the other two were at Kedlock Feus in July 2021.





Least black arches

Once rare, this species is now commonly recorded in Fife.





Lempke's gold spot

A locally-distributed species of wet habitats.





Lesser broad-bordered yellow underwing

A common species.





Lesser swallow prominent

A widespread species, occurring in a range of habitats.





Lesser yellow underwing

A common species in a variety of habitats.





Light arches

A common species in grassy places.





Light emerald

A common species of broadleaved woodland.





Lime-speck pug

Fairly common in open habitats, especially coastal habitats. This one was at Kedlock Feus in mid-July 2021.





Lunar thorn

A locally-distributed species.





Lunar underwing

A common grassland species.





Lychnis

Common in a range of habitats.





Magpie moth

Most abundant on heather moorland, but also occurs in woodland and gardens.





Map-winged swift

A species that is widespread and fairly common in Fife.





Marbled beauty

A scarce species in Scotland. Prefers habitats with stone walls or bare rock.





Marbled coronet

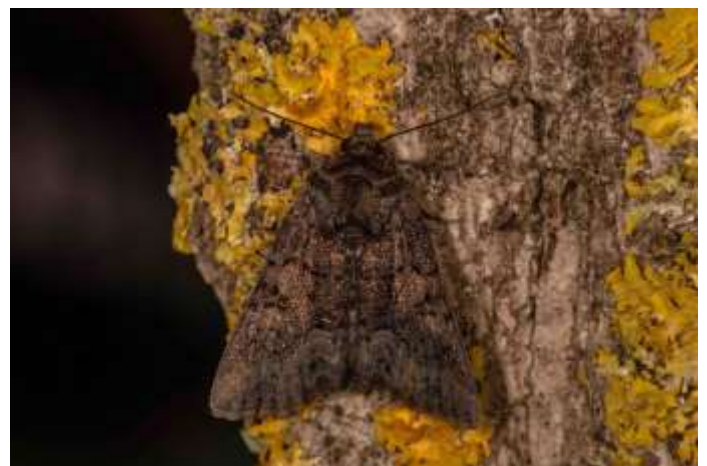
A scarce species in Fife, occurring mostly at or near the coast. The one above was at Kedlock Feus in mid-July 2022, while the one below was at Gaddon Loch in mid-June 2022.





Marbled minor

Occurs in a range of grassy habitats. Becoming less common.





March moth

The adult occurs in late winter and spring, and can be quite numerous. Females are wingless, so these are males.





May highflyer

A fairly common species where alders grow.





Merveille du jour

A fairly common species of broad-leaved woodland and hedgerows.





Middle-barred minor

A small, common summer species.





Mother Shipton

Not a common moth in Scotland. This one was at Black Craig near Norman's Law.



Mottled beauty

A common woodland species.





Mottled grey

A fairly common spring species.





Mottled pug

A locally-distributed species in Scotland.





Mottled rustic

A relatively scarce species in Fife. It occurs in a range of habitats. The one above was at Gaddon Loch and the one below at Elmwood Golf Course.





Mottled umber

A common moth of woodland, hedges and gardens that flies from October to late December. Its markings are very variable!





Mouse moth

A common species in a variety of habitats. When disturbed, it scuttles mouse-like for cover.





Muslin footman

A sparsely-distributed species. This was one of two at Kedlock Feus in early August 2021.





Narrow-winged pug

Common on heathland and moorland. The one above was at Gaddon Loch, and the one below at Black Craig near Norman's Law.





Netted pug

Seldom recorded in Fife, this one was at Gaddon Loch in early June 2022.



Northern spinach

Largely an upland species, this one was at Kedlock Feus in late July 2021.





November moth

A common species of broadleaved woodland, hedges and gardens.





Nut-tree tussock

A common species of deciduous woodland.





Oak nycteoline

Mainly a southern species that is rarely recorded in Fife. This one was near the oak trees by the east bank of Gaddon Loch on 23 March 2022.





Oblique carpet

The first record of this species in Fife was from Rossie in 2021. The one above and below left was at Gaddon Loch on 1 September 2023, and is the first Fife record away from Rossie. The one below right was at Kedlock Feus just two days later.





Ochreous pug

A species of pinewoods and plantations that is not often recorded in Fife. This one was at Gaddon Loch in mid-May 2022.



Orange swift

A common species occurring in a range of grassy habitats.





Pale brindled beauty

A common species that flies very early in the year. These were at Kedlock Feus in January and February.





Pale November moth

Very similar to but less common than the November moth. It is associated with beech woodland. This one was at Gaddon Loch in mid-October 2023.



Pale pinion

A southern species that has spread into Scotland. Occurs in October and November, and again in March and April when the adult emerges from hibernation. Locally distributed. The dark one above was at Gaddon Loch in late March 2022, while the others were at Kedlock Feus in late March and April 2021.





Pale prominent

A locally-distributed species, occurring where poplars grow. This was one of two at Gaddon Loch in mid-May 2022.





Pale-shouldered brocade

A common woodland species.





Pebble prominent

A fairly common species where willows and poplars grow.





Peppered moth

A fairly common species, occurring in a range of habitats.





Phoenix

A locally-distributed species of gardens and woodland in Fife. This one was at Kedlock Feus in late July 2022.



Pine beauty

A pretty species with an impressive hair-do! Not numerous in Fife. The one below was by Gaddon Loch in late April 2022, while the one above was at Kedlock Feus in late April 2023.





Pine carpet

Common where there are extensive areas of pines. These were at Elmwood Golf Course.





Pinion-streaked snout

A scarce species of damp habitats.





Pink-barred sawfly

Most common in woodland where there are willows or poplars.





Plain golden Y

A fairly common species, occurring in a range of habitats.





Poplar hawkmoth

The most widely-distributed and common hawkmoth in Fife.





Powdered quaker

A species of bogs, marshes and damp woodland that is not common in east Fife. This one was at Gaddon Loch in early May 2023.





Purple bar

A common species across a range of habitats.





Purple clay

A common species of broad-leaved woodland.





Red chestnut

A woodland species that is not especially common in Fife. The above was one of several at Lucklawhill in early May 2024, while the one below was at Gaddon Loch in early May 2023.





Red-green carpet

A common species of broad-leaved woodland, hedgerows and gardens.





Red-line quaker

A common autumn moth in a range of habitats. The one below is covered in rain droplets.





Red sword-grass

A locally distributed species of spring and autumn, and a regular migrant in small numbers. This one was at Gaddon Loch in mid-October 2023.





Riband wave

A common species in a range of habitats.





Rivulet

A fairly local species of open woodland and hedgerows.





Rosy rustic

A common species of late summer and autumn. Most records are of males. The larger, greyer one below left is a female.





Ruby tiger

A fairly common species of open habitats.





Rustic

A common species that is difficult to separate from the appropriately-named uncertain.





Rustic shoulder-knot

A common species in a variety of habitats.





Sallow

Common where willows and poplars grow.





Sandy carpet

Widely distributed mostly in open habitats.





Satellite

Mostly a southern species that is locally distributed in Fife. These were at Kedlock Feus in spring (below) and autumn (above and right) 2021.





Satin beauty

A woodland species that has increased its range in Scotland in recent decades.





Scalloped hazel

A fairly common species.





Scalloped oak

A widespread species in woodland, hedgerows and gardens.





Scarce umber

Despite its name, this is a relatively common late autumn species of broadleaved woodlands.





Scotch annulet

A mountain species. Those above and right were at Black Craig by Norman's Law in July and August 2022, the first records for Fife. The unusual black one below right was at there in early July 2023, and the one below also there in mid-August 2023.





Seraphim

Rarely recorded in Fife, the seraphim is a species of broadleaved woodland with poplars. These were at Gaddon Loch in May 2022.





Setaceous Hebrew character

A common species, occurring in a range of lowland habitats.





Shaded broad-bar

A common species, often seen in daylight.





Shears

This species is uncommon inland in Fife. This one was at Gaddon Loch in late May 2023.





Shoulder stripe

A common spring species.





Shoulder-striped wainscot

A species that is spreading in Scotland, and is now relatively common in Fife.





Shuttle-shaped dart

A southern species that is spreading northwards, and increasingly recorded in Fife. The one below was at Gaddon Loch in early May 2022, while the one above was at Kedlock Feus in late May 2022.





Silver-ground carpet

A common species, often seen in daylight.





Silver Y

A common migrant.





Single-dotted wave

In Fife, a locally-distributed species of woodland and gardens.



Six-spot burnet

Mostly coastal in Scotland, but this species is common at Gaddon Loch, where these photos were taken.





Six-striped rustic

A common species, mostly in wet habitats.





Slender brindle

A southern species that has spread northwards. Mainly occurs in woodland with grassy areas.





Sloe pug

In Fife, this species has only been recorded at Gaddon Loch, where there is abundant blackthorn (sloe), its food plant. This one was there in late June 2022.



Small angle shades

A widespread but rather scarce species in Fife. This one was at Kedlock Feus on 1 July 2022.





Small clouded brindle

In Scotland, a locally-distributed grassland species. These were at Kedlock Feus in July 2022 (below) and June 2023.





Small dotted buff

A common species of wet grassland.





Small dusty wave

A fairly common species of hedgerows and gardens.





Small elephant hawk-moth

A locally-distributed species whose caterpillars mostly feed on bedstraws.





Small fan-foot

A common species of broad-leafed woodland and hedgerows.





Small fan-footed wave

A common species of broad-leafed woodland.





Small phoenix

A common woodland species.





Small quaker

Mainly a southern species that is locally distributed in Scotland.





Small rivulet

A common species in a range of lowland habitats.





Small square-spot

A widely-distributed species.





Smoky wainscot

A common species of grassland.





Snout

Common in a range of habitats.





Spectacle

The caterpillars feed on nettles. Adults are sparsely distributed through Fife.





Spruce carpet

A species that was formerly locally distributed in Scotland which has become quite common.





Square-spot rustic

A common species where grass occurs.





Straw dot

Less common in eastern Scotland than further south and west.





Streak

An autumn species, common where broom occurs.





Streamer

A common species whose caterpillars feed mostly on wild dog roses.





Suspected

A scarce species in Fife, associated with birch. This rather worn individual was at Black Craig by Norman's Law in mid-August 2023.





Swallow prominent

A locally-distributed species of woodland and gardens.





Swallow-tailed moth

A large and attractive moth, mostly of woodland. Fairly common, even in towns.





Sword-grass

A species that is rapidly declining, and seldom recorded outside of the Highlands. The one above and below right was at Kedlock Feus on 23 March 2021 — only the 5th modern record for Fife. The one on the right was there on 7 April 2021, and the one below left was at Kilmany on 22 March 2022. Perhaps there is a colony in the area!





Tawny-barred angle

A common species, mostly in conifer plantations.





Triple-spotted clay

A rare species in east Scotland. It is a species of open, wet broadleaved woodland. The above two were at Black Craig by Norman's Law in late July 2022, and the one below was at the same site in early July 2023.





True lover's knot

A common species of heather moorland. This one was at Kedlock Feus in mid-July 2021, well away from its usual habitat, possibly relying on heather grown in gardens.





Turnip moth

A large moth that occurs in small numbers in a range of habitats.





Twin-spot carpet

Occurs in a variety of upland and lowland habitats.





Twin-spotted quaker

A southern species that is spreading through Scotland.





Uncertain

The above moth is certainly an uncertain, though the one below lives up to its name, as rustic cannot be definitively ruled out from these images.





V-pug

A common species that has spread from the south, although still relatively scarce in the east of Scotland. The worn individual below was at Kedlock Feus in mid-May 2021, while the one above was there in late July 2021. The one on the right was at Elmwood Golf Course in mid-April 2022.





Water carpet

Common in suitable habitat, such as rough grazing.





White ermine

A common species in a range of habitats.





White-line dart

A scarce species away from the coast. This one was at Black Craig by Norman's Law in late July 2022.





Willow beauty

Well-distributed in Fife, and often occurs in gardens.





Winter moth

A widespread and common species of late autumn and early winter.





Wood tiger

An uncommon species in Fife. This one was at Black Craig near Norman's Law in late June 2021.



Wormwood pug

A fairly common species, occurring in a range of habitats.



Yellow-barred brindell

A scarce species of broadleaved woodland. This one was at Gaddon Loch in early May 2023.



Yellow horned

A spring species that can be numerous in areas of birch woodlands. These were at Gaddon Loch in late March 2022.





Yellow-line quaker

A common species of broad-leaved woodland, moorland and hedgerows.





Yellow shell

A common species with several sub-species. Although it occurs mostly at or near the coast in Fife, it can also be found in and around the Howe of Fife, for example at Auchtermuchty Common and on moorland at Norman's Law.

