



Hoverflies of Cambo Gardens

S.T. Buckland

Hoverflies of Cambo Gardens

S.T. Buckland

This shows those species of hoverfly at Cambo Gardens that I have been able to identify and photograph. I'm grateful to Callum Halstead and Elise Methven for their enthusiasm and support.

Steve Buckland

steve@st-andrews.ac.uk

9/April/2026

Contents

| | | | |
|---------------------------------|----|-------------------------------|----|
| <i>Cheilosia illustrata</i> | 4 | <i>Myathropa florea</i> | 19 |
| <i>Cheilosia scutellata</i> | 5 | <i>Platycheirus albimanus</i> | 20 |
| <i>Dasysyrphus albostriatus</i> | 6 | <i>Platycheirus manicatus</i> | 21 |
| <i>Dasysyrphus tricinctus</i> | 7 | <i>Platycheirus peltatus</i> | 22 |
| <i>Epistrophe grossulariae</i> | 8 | <i>Platycheirus scutatus</i> | 23 |
| <i>Episyrphus balteatus</i> | 9 | <i>Scaeva pyrastris</i> | 24 |
| <i>Eristalis arbustorum</i> | 10 | <i>Scaeva selenitica</i> | 25 |
| <i>Eristalis intricaria</i> | 11 | <i>Sericomyia silentis</i> | 26 |
| <i>Eristalis pertinax</i> | 12 | <i>Sphaerophoria scripta</i> | 27 |
| <i>Eristalis tenax</i> | 13 | <i>Syritta pipiens</i> | 28 |
| <i>Eupeodes luniger</i> | 14 | <i>Syrphus ribesii</i> | 29 |
| <i>Helophilus pendulus</i> | 15 | <i>Syrphus torvus</i> | 30 |
| <i>Melangyna compositarum</i> | 16 | <i>Volucella pellucens</i> | 31 |
| <i>Melanostoma scalare</i> | 17 | <i>Volucella zonaria</i> | 32 |
| <i>Meliscaeva auricollis</i> | 18 | <i>Xylota segnis</i> | 33 |



Bumblebee blacklet *Cheilosia illustrata*

Common in summer, usually on hogweed flowers.





Bolete blacklet *Cheilosia scutellata*

A relatively scarce species in Fife, occurring mostly in woodland where boletes grow. The male above was at Cambo in mid-August 2025, and the female below in early September 2025.





Stripe-backed brusheye *Dasysyrphus albostriatus*

A sparsely-distributed species of woodlands. These are females.





Yellow-girdled brusheye *Dasysyrphus tricinctus*

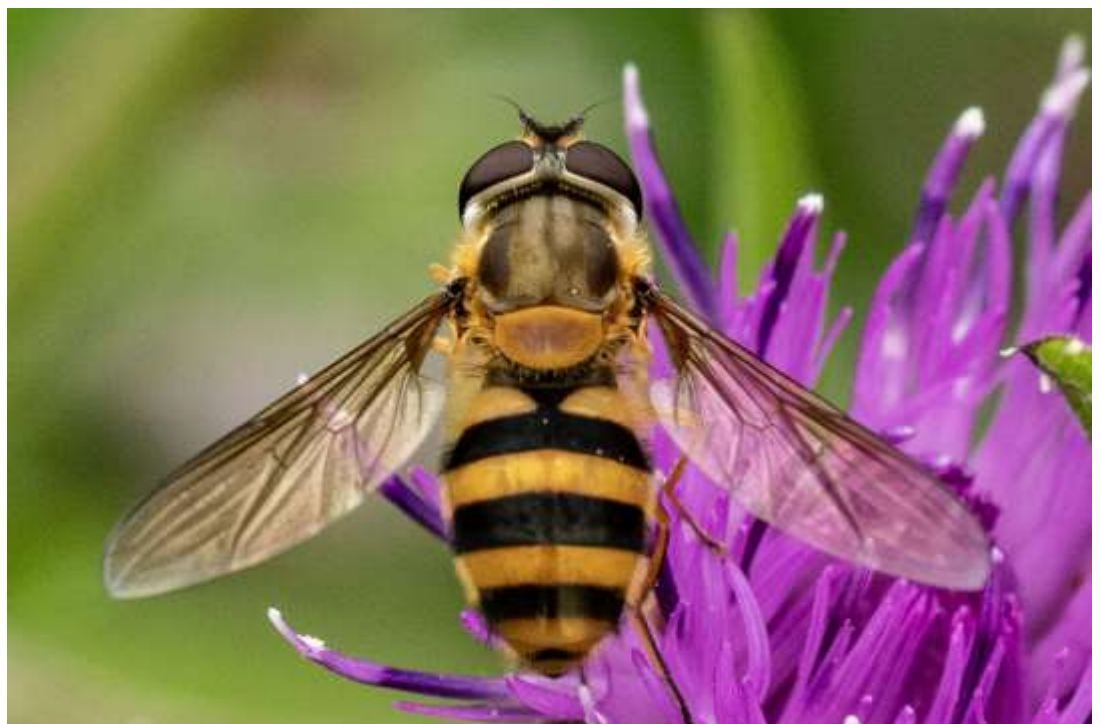
A sparsely-distributed species of woodlands and gardens. This female was by the pond at Cambo in mid-August 2025.





Black-horned smoothtail *Epistrophe grossulariae*

A widespread species that is seldom numerous. These are females.





Marmalade hoverfly *Episyrphus balteatus*

This species occurs through most of the year, and is often abundant in late spring and summer, enhanced by large migrations from southern Europe. This is a familiar hoverfly with gardeners. Female above, male below.





Eurasian drone fly *Eristalis arbustorum*

A common species of open habitats, occurring mostly in summer. These are males.





Furry drone fly *Eristalis intricaria*

A species of wet and marshy habitats, which also wanders into dryer habitats to feed. This male was nectaring on grape hyacinths in the garden in early April 2026.





Tapered drone fly *Eristalis pertinax*

A common hoverfly across a variety of habitats from March to November. Male above and below left, female below right.





Common drone fly *Eristalis tenax*

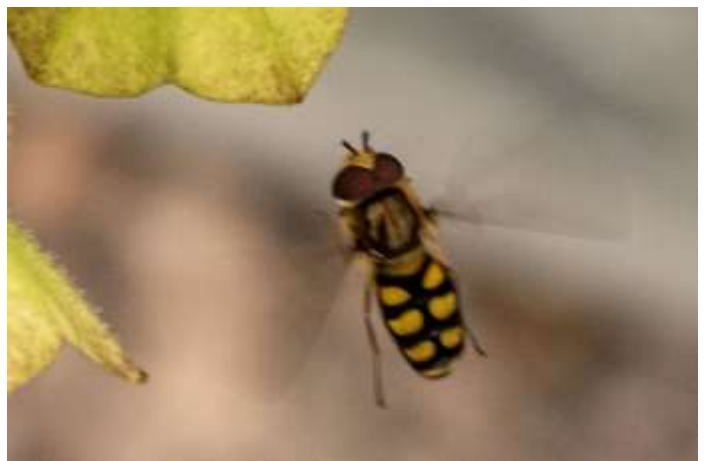
A common hoverfly through much of the year and across a variety of habitats. Female above and below left, male below right.





Lunuled aphideater *Eupeodes luniger*

A common species through much of the year and across a range of habitats. Female above, male below.





Tiger marsh fly *Helophilus pendulus*

A very common species of wet habitats. This is a female.





Matt-backed halfband *Melangyna compositarum*

A relatively scarce species, usually found along woodland edges. The adults usually feed on white umbellifers.



Long-winged duskyface *Melanostoma scalare*

Common and often abundant from April to September. Female above and below left, male below right.





Spotted thintail *Meliscaeva auricollis*

A widespread species, but it is seldom numerous. These are males.





Common batman fly *Myathropa florea*

A common species, especially in or near broad-leaved woodland. These are females.





Grey-spotted sedge-sitter *Platycheirus albimanus*

A very common small species.





Dull-backed sedge-sitter *Platycheirus manicatus*

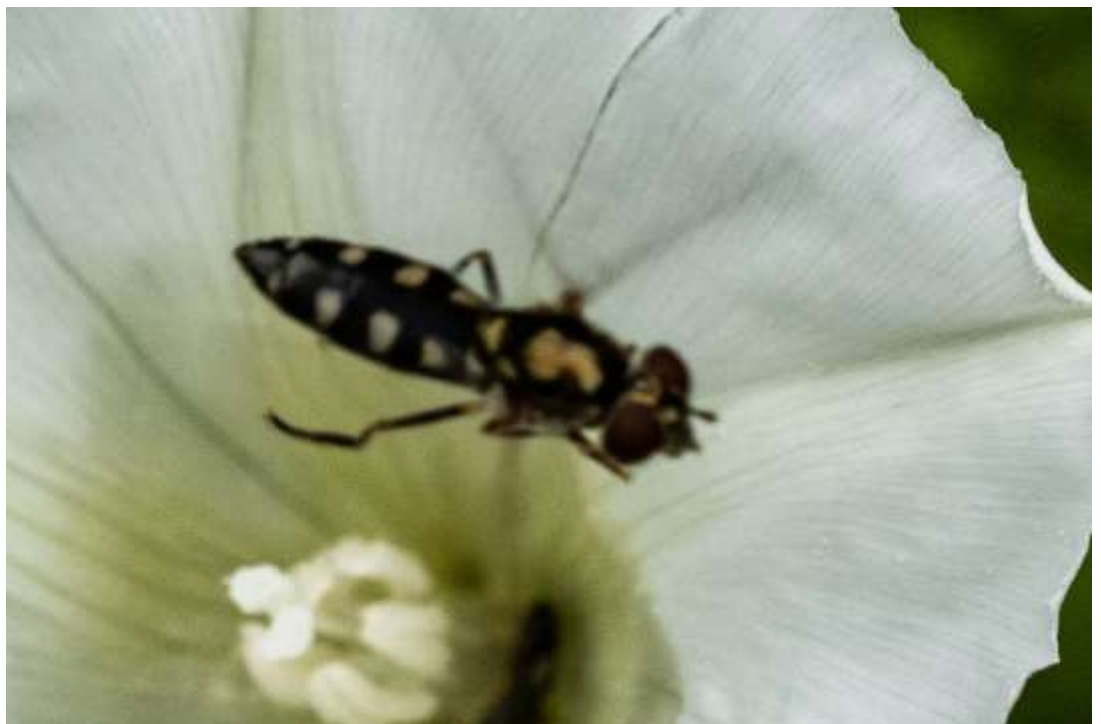
Widespread in open habitats, often seen on flowers. Its protruding mouth is distinctive. Male above and below right, female below left.





White-spotted sedge-sitter *Platycheirus peltatus*

This female belongs to the '*peltatus* group' of species, and is probably *Platycheirus peltatus*, which is by far the most common member of the group in Scotland.





Many tufted sedge-sitter *Platycheirus scutatus*

This female belongs to the '*scutatus* group' of species, and is probably *Platycheirus scutatus*, which is the most common member of the group in Scotland.



White-bowed smoothwing *Scaeva pyrastris*

A large species that is quite common, with numbers being enhanced by migrants from Europe. This is a male.





Yellow-bowed smoothwing *Scaeva selenitica*

A large species that is scarce in Fife. Female above, male below.





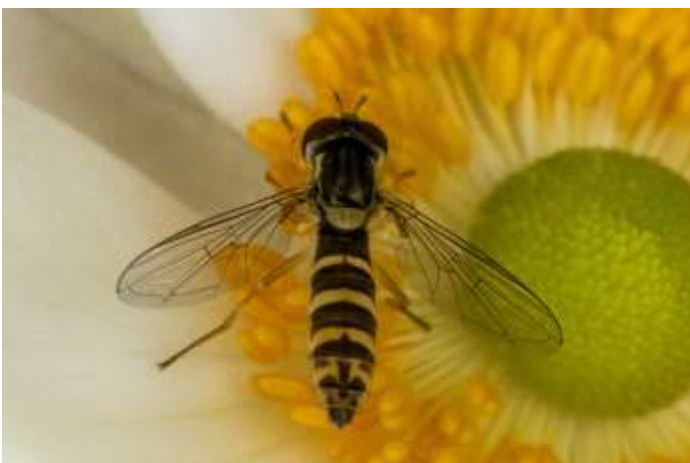
Yellow-barred pond fly *Sericomyia silentis*

Occurs mostly in fen, mire or bog habitats, but also in other wet habitats. This one was at Cambo in mid-August 2025.



Common globetail *Sphaerophoria scripta*

This species is becoming more common in Fife. The males above and below right are definitely *S scripta*. Females cannot be identified from photos, but the one below left is probably of this species.





Common compost fly *Syritta pipiens*

A common summer species in a range of habitats.





Common flower fly *Syrphus ribesii*

There are three common species of this genus that are difficult or impossible to separate from photos. Female common flower flies can be identified from the all-yellow femur of the hind leg, as can be seen in these photos. The one bottom left came to a moth light trap in early October.





Hairy-eyed flower fly *Syrphus torvus*

As its common name suggests, this species can be identified if tiny hairs are visible on the eyes, as is the case for these females.





Pied plumehorn *Volucella pellucens*

A large hoverfly that is common in summer. Its larvae feed on detritus in wasp nests.





Hornet plumehorn *Volucella zonaria*

This hornet mimic is a recent arrival in Scotland. This female was at Cambo in mid-August 2025, staying into September, and is the first confirmed UK record north of Edinburgh. Its larvae live in hornet nests or nests of social wasps.





Orange-belted leafwalker *Xylota segnis*

A common species usually seen perched or moving fast on leaves. It occurs mostly in or near woodland.

