



Micro-moths of Cambo Gardens

S.T. Buckland

Micro-moths of Cambo Gardens

S.T. Buckland

I have included images of the species that I have been able to photograph in and around the walled garden at Cambo. My thanks go to Callum Halstead and Elise Methven for their help and enthusiastic support, and to Nigel Voaden for confirming the identity of the more difficult species.

Steve Buckland

steve@st-andrews.ac.uk

17/December/2025

Contents—micro-moths

<i>Achroia grisella</i>	4	<i>Depressaria radiella</i>	24	<i>Scrobipalpa</i> sp.	39
<i>Acleris forsskaleana</i>	5	<i>Emmelina monodactyla</i>	25	<i>Stenoptilia bipunctidactyla</i> / <i>Emmeline monodactyla</i>	40
<i>Acleris laterana</i>	6	<i>Epinotia immundana</i>	26	<i>Udea ferrugalis</i>	41
<i>Acleris rhombana</i>	7	<i>Epinotia nisella</i>	27	<i>Udea prunalis</i>	42
<i>Acleris sparsana</i>	8	<i>Epiphyas postvittana</i>	28	<i>Yponomeuta evonymella</i>	43
<i>Acleris variegana</i>	9	<i>Eudonia lacustrata</i>	29	<i>Yponomeuta padella</i>	44
<i>Acrobasis advenella</i>	10	<i>Eudonia mercurella</i>	30	<i>Yponomeuta sedella</i>	45
<i>Agriphila straminella</i>	11	<i>Nomophila noctuella</i>	31	<i>Ypsolopha sequella</i>	46
<i>Agriphila tristella</i>	12	<i>Palpita vitrealis</i>	32		
<i>Anthophila fabriciana</i>	13	<i>Pandemis cerasana</i>	33		
<i>Aphomia sociella</i>	14	<i>Pandemis heparana</i>	34		
<i>Blastobasis adustella</i>	15	<i>Phycitodes</i> sp.	35		
<i>Blastobasis lacticolella</i>	16	<i>Platyptilia gonodactyla</i>	36		
<i>Blastobasis vittata</i>	17	<i>Plutella xylostella</i>	37		
<i>Bryotropha domestica</i>	18	<i>Pyrausta aurata</i>	38		
<i>Cameraria ohridella</i>	19				
<i>Catoptria falsella</i>	20				
<i>Catoptria pinella</i>	21				
<i>Clepsis consimilana</i>	22				
<i>Cnephasia longana</i>	23				



Lesser wax moth

Achroia grisella

A rare moth in Scotland. These were at Cambo Gardens in late July and August 2025, and is the third location in Fife at which the species has been recorded. Its caterpillars feed on wax in beehives and bee nests.





Scalloped tortrix *Acleris forsskaeana*

A locally-distributed species in Scotland, occurring where field maples or sycamores grow.





Dark-marked tortrix *Acleris laterana*

A common species of late summer and autumn, often recorded in gardens.





Rhomboid tortrix *Acleris rhombana*

A fairly common species, especially where fruit trees grow.





Lead-coloured tortrix *Acleris sparsana*

A common species, especially in autumn and where sycamores or beeches grow.





Garden rose tortrix *Acleris variegana*

A locally-distributed species, occurring mostly in gardens and woodland margins. These were at Cambo Gardens in late August and mid-September 2025.





Hawthorn knot-horn *Acrobasis advenella*

A fairly common species in Fife, occurring where hawthorn is available.



Straw grass-moth *Agriphila straminella*

An abundant grass moth.



Common grass-moth *Agriphila tristella*

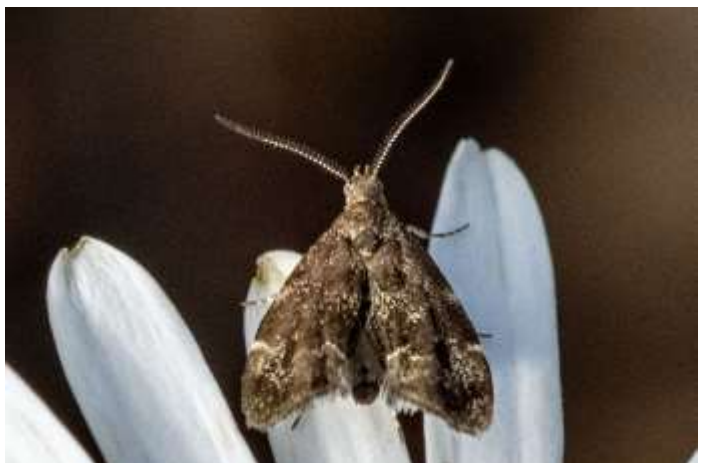
An abundant grass moth.





Nettle-tap *Anthophila fabriciana*

A common day-flying moth where nettles grow.





Bee moth *Aphomia sociella*

A common moth whose caterpillars feed on debris and larvae in bee and wasp nests.



Common masoner *Blastobasis adustella*

A common summer and autumn species.



Large pale masoner *Blastobasis lacticolella*

A common species, most numerous in early summer.





Dotted masoner

Blastobasis vittata

The UK distribution of this non-native species is concentrated along the south coast of England and in Fife! These were recorded at Cambo in late October and early November 2025.





House moss-moth *Bryotropa domestica*

The caterpillars of this species feed on moss growing on stone walls.





Horse-chestnut leaf-miner *Cameraria ohridella*

This species arrived in the UK in 2002, and has been spreading northwards. This one was at Cambo Gardens in late August 2025.





Chequered grass-moth *Catoptria falsella*

A locally-distributed species associated with mosses.





Pearl grass-moth *Catoptria pinella*

A locally-distributed species that occurs in a range of mostly open habitats.



Rufous tortrix *Clepsis consimilana*

A relatively scarce species in Fife. It is mostly recorded in gardens or parks.





Buff grey tortrix *Cnephasia longana*

Sparsely distributed in Fife, and seldom recorded elsewhere in Scotland.





Parsnip moth *Depressaria radiella*

A common species that can be encountered through much of the year where common hogweed or wild parsnip grows.



Common plume *Emmelina monodactyla*

A locally-distributed species in Scotland, which can be recorded in a wide range of habitats and in any month of the year.





Birch tortrix *Epinotia immundana*

This species occurs in damp habitats with birches or alders.



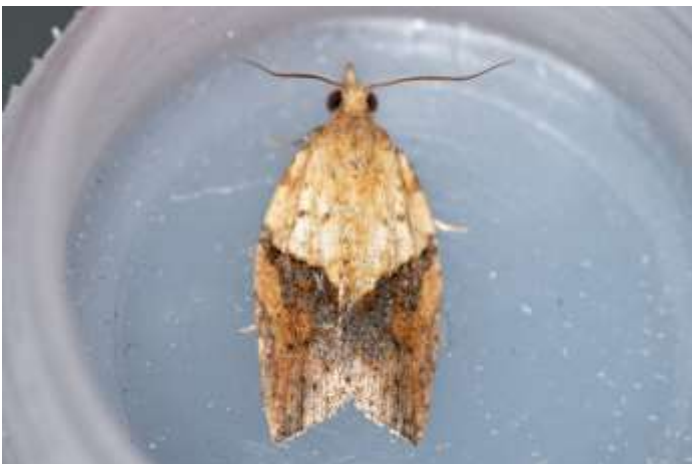
Brindled poplar tortrix *Epinotia nisella*

A common species where willows or poplars grow.



Light brown apple-moth *Epiphyas postvittana*

An Australian species that has spread through much of the British Isles. It is scarce in most of Fife, but is plentiful in Cambo Gardens.





Tawny grey *Eudonia lacustrata*

A common species in woodland and open habitats.





Garden grey *Eudonia mercurella*

A fairly common species, associated with mosses.





Rush veneer *Nomophila noctuella*

A migrant in small numbers and mostly a coastal species in Fife.





Olive-tree pearl *Palpita vitrealis*

A migrant that is rarely recorded in Scotland. This one was at Cambo Gardens in mid-September 2025.





Barred fruit-tree tortrix *Pandemis cerasana*

A common summer species in gardens, parks, hedgerows and open woodland. This one was at Cambo in late September, indicating that it was a second generation moth, which is unusual for this species in Fife.





Dark fruit-tree tortrix *Pandemis heparana*

A common species. Its caterpillars feed on fruit trees, but also a range of other deciduous trees.



Phycitodes sp.

One of several species that are difficult or impossible to identify to species level from photos.



Triangle plume *Platyptilia gonodactyla*

A species of rough grassland that is sparsely distributed in east Fife.



Diamond-back moth *Plutella xylostella*

This moth is a frequent migrant, and can occur almost anywhere.



Mint moth *Pyrausta aurata*

A very rare species in Scotland, with one previous record from Fife and one from the border with England. This one was at Cambo Gardens in late July 2025.





Scrobipalpa sp.

Many *Scrobipalpa* cannot be identified to species without dissection.



Twin-spot plume / common plume

Stenoptilia bipunctidactyla / *Emmelina monodactyla*

The twin-spot plume is a relatively common species in Fife, occurring where scabious grows. These photos are not clear enough to entirely rule out common plume.





Rusty-dot pearl *Udea ferrugalis*

A scarce migrant, recorded mostly from coastal sites.





Dusky pearl *Udea prunalis*

A locally-distributed species in a range of lowland habitats.



Bird-cherry ermine *Yponomeuta evonymella*

A common species. Its caterpillars form webs on bird cherry, often stripping the trees of leaves completely.



Orchard ermine *Yponomeuta padella*

A fairly common species. Its caterpillars form webs on blackthorn or hawthorn. These are probably of this species, but cannot be identified with certainty from an image.





Orpine ermine

Yponomeuta sedella

The one bottom right was at Cambo Gardens in late July 2025, and the other two adults were among four recorded there in August 2025. The caterpillar was there in early October 2025. These are the first records of the species from Scotland.





Pied rabbit moth *Ypsolopha sequella*

A southern species that has recently spread into Scotland. The one below right was at Cambo Gardens in August 2025, while the other one was there in early October 2025.

