



# Larger mammals of Bankhead Moss

S.T. Buckland

# Larger mammals of Bankhead Moss

S.T. Buckland

I have included just those species that I have photographed at Bankhead Moss. All except one of the red squirrel photos were taken since the start of 2024.

Steve Buckland

[steve@st-andrews.ac.uk](mailto:steve@st-andrews.ac.uk)

26/April/2024

# Contents

Badger	4
Brown hare	5
Grey squirrel	6
Red fox	7
Red squirrel	8
Roe deer	9



## Badger

The mixed woodland south of the Moss is called 'badger wood', and there is still an active sett on the reserve. This badger was taking aired bedding back into the sett just after sunset in late April.





## Brown hare

Hares use the reserve as a refuge, moving out into the surrounding fields to feed — and cavort!





## Grey squirrel

This grey squirrel was in the carr on the east side of the reserve in late April 2024. It is the only grey squirrel I have seen on the reserve so far. Photos taken with a macro lens, when I was photographing insects!





## Red fox

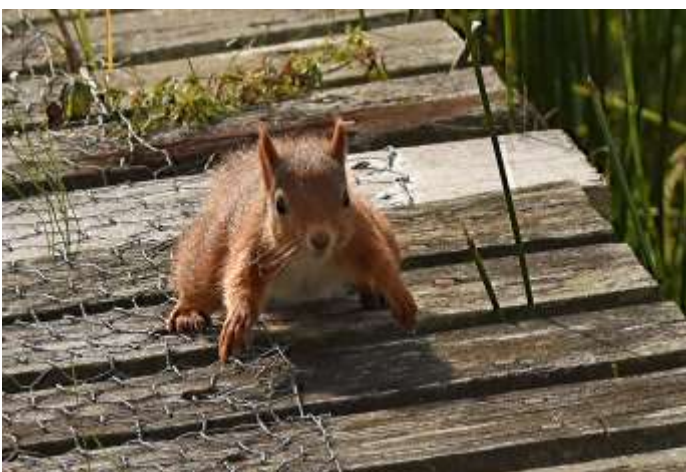
This fox emerged from the marsh at dawn in early April. It was probably making its way back to its den. A roe deer alerted me to its presence, by barking at it.





## Red squirrel

A few red squirrels live in the mixed woodland just south of the moss. They occasionally wander to other parts of the reserve, like the two here that were using the boardwalk.







## Roe deer

Always present. The number on the reserve is often in double figures.

