



Mammals of the East Neuk of Fife

S.T. Buckland

Mammals of the East Neuk of Fife

S.T. Buckland

I have included just those species that I have photographed in and around the East Neuk. I have taken a generous interpretation of the boundaries of the East Neuk, delineated by the coast from St Andrews Harbour to Leven, and west from St Andrews to Ceres, and south to Leven.

Steve Buckland

steve@st-andrews.ac.uk

8/April/2024

Contents

Badger	4
Bottle-nosed dolphin	5
Brown hare	6
Grey seal	7
Grey squirrel	8
Rabbit	9
Red fox	10
Red squirrel	11
Roe deer	12



Badger

Occurs in suitable woodland in the East Neuk. This badger was taking aired bedding back into its sett just after sunset in late April.





Bottle-nosed dolphin

Increasing, and now frequently seen around the coast of the East Neuk.





Brown hare

Widespread in small numbers. The one above was at Balcaskie, while the ones below were at Bankhead Moss.





Grey seal

Common around the coast of the East Neuk. These were at Pittenweem.





Grey squirrel

This grey squirrel was in the carr on the east side of Bankhead Moss in late April 2024. Photos taken with a macro lens, when I was photographing insects!





Rabbit

Common. For this species, I have stretched the boundaries of the East Neuk even further, and included these photos from the Isle of May!





Red fox

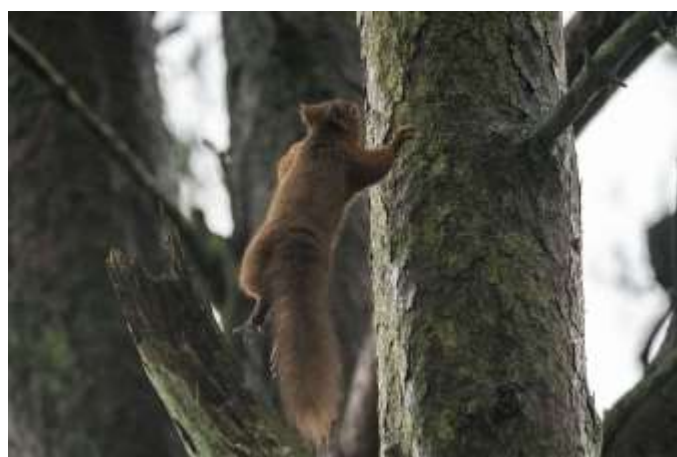
This vixen was at Cameron Reservoir.





Red squirrel

Limited by the lack of suitable habitat in most of the East Neuk. These were at Bank-head Moss.





Roe deer

Common. The above buck and the leaping deer were at Bankhead Moss, while the others were at Kilminning.

